

xpress boats

60
ANNIVE

1966-2026



BASS BAY SKIFF CRAPPIE HUNTING CATFISH

1967
1968
1969
1970
1971
1972
1973
1974
1975
1976
1977
1978
1979
1980
1981
1982
1983
1984
1985
1986
1987
1988
1989
1990
1991
1992
1993
1994
1995
1996
1997
1998
1999
2000
2001
2002
2003
2004
2005
2006
2007
2008
2009
2010
2011
2012
2013
2014
2015
2016
2017
2018
2019
2020
2021
2022
2023
2024
2025
2026

CELEBRATING **60** YEARS OF *Innovation & Xcitement*



BASS SERIES

| | |
|--------------------------|----------|
| Xclusive R Bass | P. 8-9 |
| Xclusive Pro Bass Series | P. 10-11 |
| Hyper-Lift Bass Series | P. 12-13 |
| Xplorer Bass Series | P. 14-15 |



BAY SERIES

| | |
|---------------------------|----------|
| Xclusive R Bay | P. 18-19 |
| X-Bay/X-Bay Lounge Series | P. 20-21 |
| Hyper-Lift Bay Series | P. 22-23 |
| Hyper-Lift H210/H190 Bay | P. 24-25 |
| Shallow Water Ba Series | P. 26-27 |
| Xplorer CC Series | P. 28-29 |



SKIFF

| | |
|-------|----------|
| Skiff | P. 30-31 |
|-------|----------|



Celebrating 60 years of excellence is no small feat for this family-owned and operated company. Xpress Boats began in a small schoolhouse in Friendship, Arkansas, in 1966, with a big vision to build a quality aluminum boat that could stand the test of time. Xpress saw its dreams become reality with the introduction of the first original all-welded aluminum boat. Our innovative spirit has birthed many firsts in the aluminum boat industry, including our famous Hyper-Lift Hull. Continual striving for the best has opened up avenues in the fishing and waterfowl boating world that other companies have emulated over the years. We value every customer who chooses to place their trust in the original all-welded aluminum boat to safely take them out on the water, make incredible memories, and return home to share in the bounty of their experiences, generation after generation. The 2026 lineup of Xpress Boats is a testament to our laser focus to consistently stay at the top of our game by investing in technology, infrastructure, and most importantly, personnel. We are proud to unveil our XR Hyper-Lift Hull this year, which is used on our all-new XR21 Bass and XR21 Bay models. Duck hunters will delight in the all-new lightning-fast, tiller-handled X18DB, along with the all-new surface drive Bayou Series. Thank you for being a part of this journey over the years!



CRAPPIE

Hyper-Lift Crappie P. 34-35



HUNTING SERIES

Xclusive Duck Boat..... P. 38-39
Bayou Series P. 40-41
HD Duck Boat..... P. 42-43
DBX Series..... P. 44-45



CATFISH

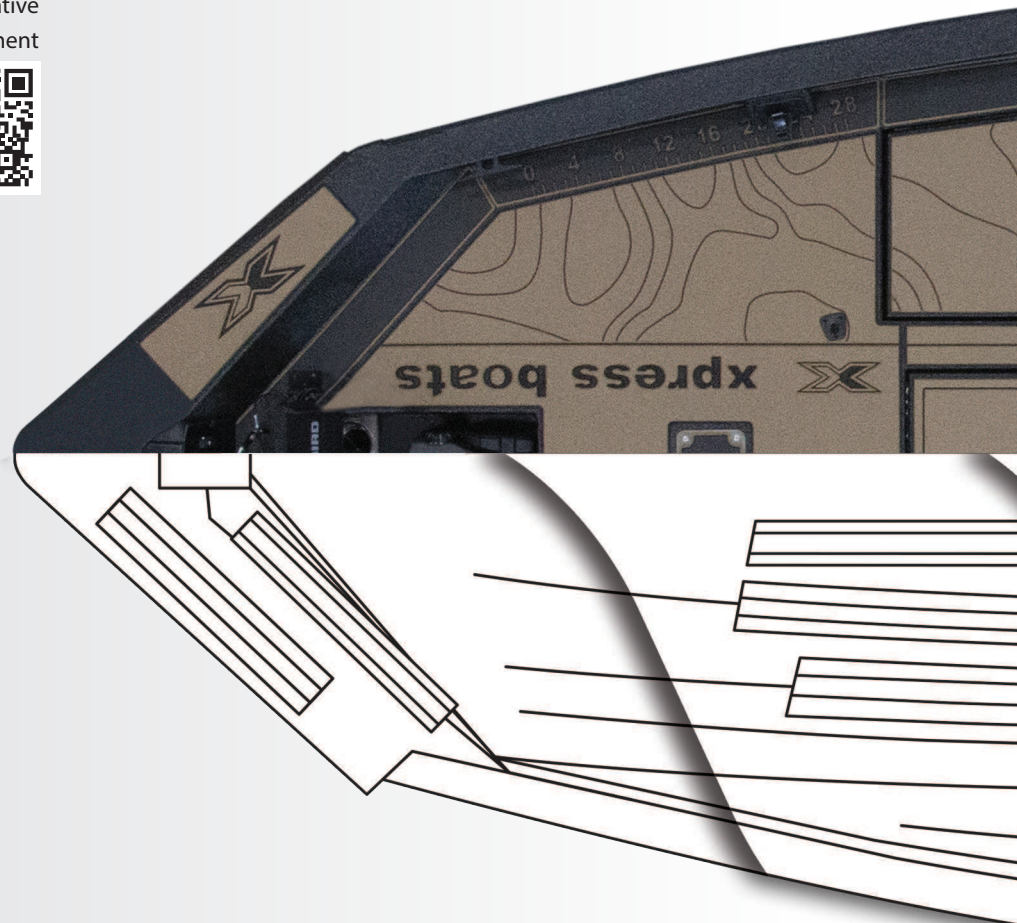
Xplorer Catfish..... P. 46-47

WHY XPRESS?

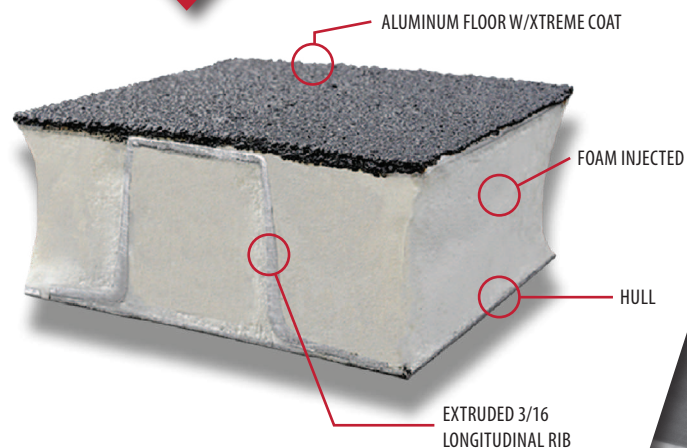
Xpress Boats, creator of the original all-welded aluminum boat, understands that your time is valuable and we appreciate your interest and investment in our innovative product. With care and maintenance, you will experience decades of excitement with your Xpress craft. Whether it's our pioneering Hyper-Lift Hull or the exceptional performance of every one of our boats, the reasons for choosing Xpress are clear. To find out more, scan the code or visit www.xpressboats.com/why-xpress.



- Family Owned and Operated
- Unparalleled Construction
- Pioneered the Hyper-Lift Hull
- Xtreme Engineering
- Xceptional Performance
- Elite Proven
- Lifetime, Transferable Structural Warranty
- Xclusive Partnership with Yamaha
- Dealer Network
- #1 Selling 20-Foot Aluminum Pad Hull Bay Boat
- Highest Resale Value in the Market



CROSS SECTION: XPRESS HULL AND FLOORING





THE XPRESS DIFFERENCE

No two boats are created —or built— the same. They may both have an attractive exterior covered with shiny metallic paint, but the hull design, structural support, and substrate can vary drastically. From our pioneering design to our innovative construction techniques, each component of our all-welded aluminum boats comes together to deliver The Xpress Difference. Visit www.xpresboats.com/xpress-difference or scan the code to learn more.



The Original All-Welded Aluminum Boat
The Finest Aluminum
Handcrafted Welding
High-End Hull Construction
Painting & Curing Process
Best-in-Class Components
Also Includes
 • BackTrack Trailers

HIGH-PERFORMANCE BASS PURSUING MACHINE

XPRESS BASS SERIES

[XCLUSIVE R BASS BOAT / XCLUSIVE PRO BASS SERIES / HYPER-LIFT BASS SERIES / XPLOER BASS SERIES]

When building an Xpress Bass Boat, our focus is simple: performance and safety. Performance that gets you to and from your fishing destination quickly, comfortably, and most importantly, safely. At Xpress Boats, we build excitement. The excitement is not limited to the boat ride; it continues once you reach your destination. Spacious storage for all of your fishing equipment, huge casting decks to offer one of the finest, most comfortable fishing platforms on the market, and accessories to ensure you have a place for all of your fishing needs. These are all reasons the Xpress Xclusive Pro Series is chosen by top professional anglers like Lee Livesay, Bill Lowen, and Caleb Sumrall — and reasons you should settle for nothing less than Xpress.



"Most people know me from Duck Commander, yet what they don't know is my love and passion for fishing. That thump on the line is as exciting as a big ol' greenhead responding to my call. I finally reached a point in my life where I could buy a new bass boat and I had some very specific requirements due to the lakes and rivers I frequent. It has to be tough, it has to be agile, it has to have all of the creature comforts that I demand and most importantly, it has to be a safe, stable platform since I have two new young'ns that will be coming along for years to come. I tested all of them on the market, and none compared to the one solution, one choice, and that was not settling for anything less than the best, Xpress!"

- JUSTIN MARTIN: DUCK COMMANDER/INFLUENCER



 **YAMAHA**

4 WINS on the **BASSMASTER ELITES** and one at the **CLASSIC!**

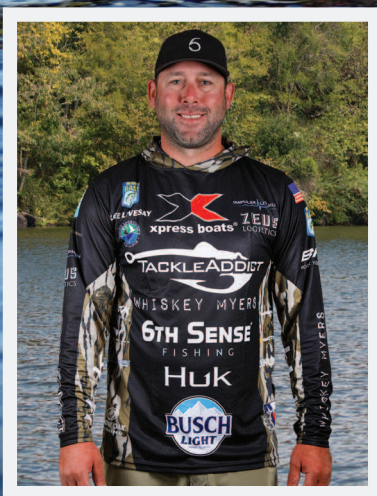


XCLUSIVE R BASS BOATS: *Powering Professional Anglers to Success*

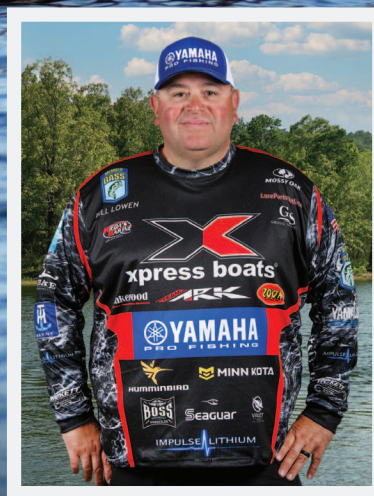
Since the inception of competitive bass fishing tournaments in the 1960s, only a select group of anglers have had the privilege of hoisting the blue Bassmaster Elite Series Champion trophy to celebrate their accomplishments. An even smaller group has earned the bronze-colored Bassmaster Classic World Champion trophies. Despite their deceptively lightweight appearance, these trophies demand considerable strength and stamina to hold high. We are proud of the anglers representing us in the industry and eager to see the next Bassmaster trophy held high!

Professional anglers Bill Lowen, Lee Livesay, and Caleb Sumrall have chosen to navigate our XR21 for the 2025 and 2026 B.A.S.S. Elite seasons, citing their shallow draft, lighter weight, durability, performance, and expansive front deck as key competitive advantages relied upon throughout the season. These professional anglers chose to transition from fiberglass to aluminum, aligning themselves with thousands of other anglers who recognize the value of running an all-welded, high-performance aluminum boat.

Whether you're a tournament angler, professional guide, or fishing enthusiast, you can enjoy the advantages of years of engineering refinement integrated into our all-new XR21. Are you ready to join the Xpress family and get into an all-welded beast?



Lee Livesay
XR21 BASSMASTER ELITE ANGLER



Bill Lowen
XR21 BASSMASTER ELITE ANGLER



Caleb Sumrall
XR21 BASSMASTER ELITE ANGLER



| | |
|--------------------------------|-------------|
| | XR21 |
| Length | 21' 2" |
| Bottom | 67" |
| Beam | 93" |
| Sides | 22" |
| Transom Height | 22" |
| Fuel Tank Capacity | 47 gal. |
| Approx. Weight | 1,580 lb. |
| Max Wt./Per/Mo/GR | 1,800 lb. |
| Total Wt. Per Cap | 4,775 lb. |
| Aluminum - 5052 Gauge | 0.125 |
| Maximum HP | 250 |
| Overall Package Length | 28' 4" |
| BackTrack Trailer Model | AW21LE |

- Overall package length includes trailer and engine
- All measurements are approximate
- Photos may include optional equipment

STANDARD FEATURES

XR Hyper-Lift Hull
All-Welded Construction
Longitudinal Rib Construction
Unibody Injected Foam Construction
Full Front Deck Design
Charcoal Paint and Xtreme Coat Liner
X-Wing Fiberglass Console w/Graph Recess
Tinted Windshield
Spaghetti Matting in Front Deck Storage
2 Built-in Cupholders in Cockpit Floor
Coin Box w/Organizer and Phone Charger
2 Retractable Rod Straps
Dual Blinker Trim
Lift Arms on Lids
SeaDek Liner w/Floor Kit & Accent Kit
Fish Ruler
Tackle Organizer in Center Storage

Under Console Lighted Logo Light
Built-in Cooler in Front Deck Step
SeaDek Lid Sound Dampners
Seat Box w/Storage
Passenger Foot Rest w/Storage
Slam Latches on Livewell Lids
Flush Mount Controls
Recessed Trolling Motor Foot Well
Xtreme Coat Under Lids and in Seat Box
1 Butt Seat w/Adjustable Pro Pole
1 Fold Down Fish Seat w/13" Extensions
Front Deck Lockable Storage Boxes
4 Fold Down Stainless Steel Black Cleats
Trim Switch on Bow
Thru Transom Hydraulic Hose Fittings
6 Gauge Trolling Motor Harness
Remote Battery Switch

Seastar Hydraulic Steering (Greater than 150HP)
Recirculating Livewell in Rear Deck w/Divider
Auto Bilge Pump and Manual Bilge
Remote Livewell Drain
Pro Livewell Oxygenator
Bucket Driver and Passenger Seats w/Storage Box
Humminbird Xplore 9 CMSI+ Flush Mounted in Console
High Speed Transducer w/Splitter Cable
Minn Kota Ultrex 80/MDI/MR 52"
Minn Kota 3 Bank Charger
10" Hydraulic Jack Plate
Lights in Livewell & Storage
Digital Switches
Tach, Trim, Fuel and Water PSI Gauges
BackTrack 6" Frame Xtreme Trailer

ALL-NEW

XCLUSIVE R BASS BOAT

TOURNAMENT READY, REDEFINED

[XR21]



The all-new XR21 redefines performance in a tournament-ready bass boat. Built from the ground up with precision engineering, aggressive styling, and all-welded aluminum construction, the XR21 delivers the speed, strength, and fishability serious anglers demand. Unmatched performance comes from our XR Hyper-Lift Hull, providing blistering hole shots and razor-sharp handling, powered by Yamaha high-performance engines that push limits on the water. The XR21 isn't just a boat—it's a statement.



XR21

Shown w/standard SeaDek and
optional Power-Poles



STANDARD FEATURES

Hyper-Lift Hull
All-Welded Construction
Longitudinal Rib Construction
Unibody Injected Foam Construction
Full Front Deck Design
Choice of Paint and Xtreme Coat Liner
X-Wing Fiberglass Console w/Graph Recess
Tinted Windshield
Remote Battery Switch
Remote Livewell Drain
2 Built in Cupholders w/Storage in Cockpit
Lift Arms on Lids
Fish Ruler
Tackle Organizer in Center Storage
Under Console Lighted Logo Light
Storage Liner Boxes in Rear Storages
Day Box in Front Deck Storage (X21)
Built-in Cooler Step w/SeaDek Pad
SeaDek Lid Sound Dampners
NEW Stainless Boarding Step
Seat Box w/Storage & Center Cooler
Slam Latches on Livewell Lids
NEW Port Side Tool Holder
Recessed Bow Light
Built-in Large 40 Gal. Fuel Tank
Xclusive Graphics
Flush Mount Controls
Recessed Trolling Motor Foot Well w/Stainless Steel Tool Holder
SeaDek Step Pad on Bow
Xtreme Coat Under Lids and in Seat Box
NEW 1 Butt Seat w/Adjustable Pro Pole
1 Fold Down Fishing Seats w/13" Extensions
Front Deck Lockable Storage Boxes
2 Storage Boxes in Rear Deck
Trim Switch on Bow
Thru Transom Hydraulic Hose Fittings
8 Gauge Trolling Motor Harness
Baystar Hydraulic Steering (150 HP or Less)
Port Side Xclusive Rod Organizer
Recirculating Livewell in Rear Deck w/Divider
Bilge Pump
Tuck & Roll Driver and Passenger Seats w/Storage Box
Humminbird Helix 7 Chirp MSI Flush Mounted in Console
High Speed Transducer w/Splitter Cable
Minn Kota Max 70 52" Trolling Motor
Minn Kota 2 Bank Charger
6" Jack Plate
Tach, Trim, Fuel and Water PSI Gauges
BackTrack Single Axle Aluminum Trailer w/Aluminum Wheels



X21 PRO

Shown w/optional
SeaDek

X19 PRO

Shown w/optional
Appearance Pkg.

| | X21 PRO | X19 PRO |
|--------------------------------|-----------|-----------|
| Length | 21' | 19' |
| Bottom | 67" | 67" |
| Beam | 95" | 95" |
| Sides | 22" | 22" |
| Transom Height | 22" | 22" |
| Fuel Tank Capacity | 40 gal. | 40 gal. |
| Approx. Weight | 1,580 lb. | 1,390 lb. |
| Max Wt./Per/Mo/GR | 1,800 lb. | 1,700 lb. |
| Total Wt. Per Cap | 4/775 lb. | 4/700 lb. |
| Aluminum - 5052 Gauge | 0.125 | 0.125 |
| Maximum HP | 150-250* | 150-200* |
| Overall Package Length | 26' 10" | 24' 2" |
| BackTrack Trailer Model | AW21-A | AW19-A |

- *Higher horsepower rating requires hydraulic steering purchase
- 6" jack plate is recommended for all engines 150 HP and above
- Overall package length includes trailer and engine
- All measurements are approximate
- Photos may include optional equipment



"I choose to run an Xpress for the simple fact that it is tailor made to fit all of my fishing needs. Whether I'm in six inches of water, way up a creek, or in the middle of the Great Lakes chasing smallmouths, the X21 provides the platform for it all. With the Fastest hole shot in the game, massive tackle storage and a front deck big enough for the entire family, my Xpress simply gets its done."

- LUKE DUNKIN: HOST OF LOW BUDGET LIVE/INFLUENCER



XCLUSIVE PRO BASS SERIES

XCLUSIVE SAYS IT ALL, THE BEST OF THE BEST

[X21 PRO / X19 PRO]

One of the finest-performing fishing solutions on the water is within your reach. Anglers choose it season after season for its shallow draft, light weight, durability, performance, and expansive front deck—key advantages that deliver tournament-level results. Many are switching from fiberglass to all-welded aluminum for its unmatched value and high performance. Whether you're a tournament angler, professional guide, or fishing enthusiast, you'll appreciate the years of engineering refinement built into our Xclusive Pro Bass Series. Are you ready to join the Xpress family?

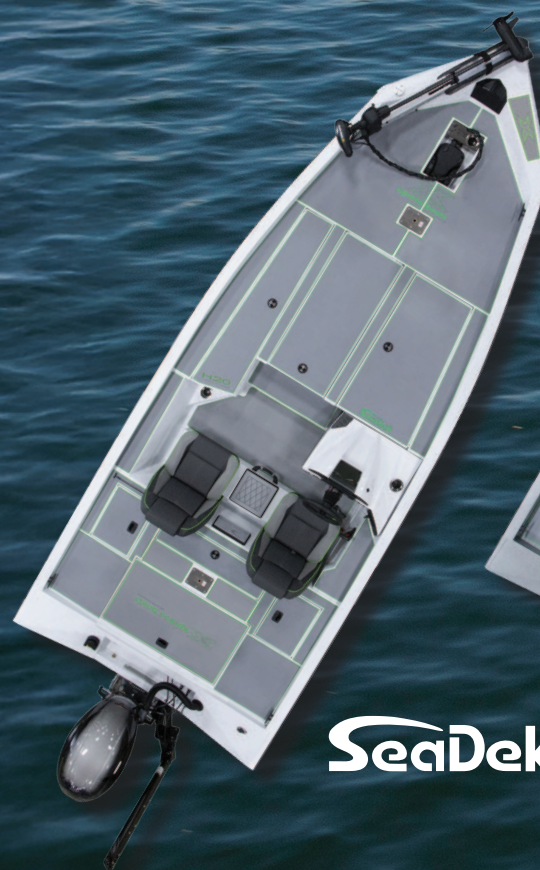


STANDARD FEATURES

Hyper-Lift Hull
All-Welded Construction
Longitudinal Rib Construction
Unibody Injected Foam Construction
Choice of Charcoal, White, Silver, Gulfsand or Camo Paint
Xtreme Coat Liner
Seadek Liner on Decks
Soft Sided Cooler w/Logo
X-Wing Fiberglass Console & Tinted Windshield
Recessed Trolling Motor Foot Well w/Stainless Steel Tool Holder
Recessed Bow Light
NEW Stainless Boarding Step
1 Fold Down Fishing Seats w/13" Extensions
1 Butt Seat w/Adjustable Pro Pole
Xtreme Coat Under Lids and in Seat Box
Front Deck Lockable Storage Boxes w/Liners
2 Rear Deck Boxes w/Tackle Tray Storage
8 Gauge Trolling Motor Harness
Aerated Livewell in Rear Deck
Bilge Pump
Hydraulic Lift Arms on FD Center & Starboard Lids (H20 Only)
Bucket Driver and Passenger Seats w/Storage Box
SeaDek Center Seat
Humminbird Helix 5 Graph
Minn Kota 45 Edge Trolling Motor
2 Bank Charger
6" Jack Plate (H20 Only)
Baystar Hydraulic Steering (H20 Only)
Lockable Rod Box
Tach, Trim, Fuel and Water PSI Gauges
BackTrack Single Axle Aluminum Trailer w/Alum Wheels

| | H20 | H18 | H17 |
|--------------------------------|-----------|-----------|-----------|
| Length | 20' | 17' 10" | 17' |
| Bottom | 67" | 67" | 67" |
| Beam | 93" | 93" | 93" |
| Sides | 22" | 22" | 22" |
| Transom Height | 22" | 22" | 22" |
| Fuel Tank Capacity | 36 gal. | 18 gal. | 18 gal. |
| Approx. Weight | 1,365 lb. | 1,340 lb. | 1,295 lb. |
| Max Wt./Per/Mo/GR | 1,550 lb. | 1,400 lb. | 1,300 lb. |
| Total Wt. Per Cap | 4/700 lb. | 4/675 lb. | 4/675 lb. |
| Aluminum - 5052 Gauge | 0.125 | 0.125 | 0.125 |
| Maximum HP | 175 | 115 | 90 |
| Overall Package Length | 25' | 23' 2" | 22' 2" |
| BackTrack Trailer Model | AW20-A | AW18-A | AX17-A |

- Overall package length includes trailer and engine
- All measurements are approximate
- Photos may include optional equipment



H20
Shown w/optional
Appearance Pkg.



H18
Shown w/optional
Appearance Pkg.



H17
Shown w/optional
Appearance Pkg.

SeaDek

HYPER-LIFT BASS SERIES

HIGH-PERFORMANCE, COST EFFECTIVE XCITEMENT

[H20 / H18 / H17]



The Hyper-Lift Bass Series, available in 17, 18, and 20-foot lengths, combines the finest padded hull design in the industry, years of innovation, and essential features set at an economical price. Your back will appreciate the ergonomically designed sport seating that offers more comfort and support while running the Yamaha outboard. The expanded front deck, with increased storage capacity and new drop-in liners, is a bonus for anglers of all ages. Best-in-class standard features include a Humminbird graph and Minn Kota trolling motor. The fast, dry, pad hull design of the Hyper-Lift Bass Series will get you to and from your destination safely and most certainly quickly!



 YAMAHA



| | XP200 | XP180 | XP170 |
|-------------------------|-------------|-----------|-----------|
| Length | 20' 3" | 18' | 17' |
| Bottom | 67" | 60" | 60" |
| Beam | 95" | 86" | 86" |
| Sides | 26" | 24" | 24" |
| Transom Height | 22" | 21" | 21" |
| Fuel Tank Capacity | 18 gal. | 18 gal. | 18 gal. |
| Approx. Weight | 1,261 lb. | 1,045 lb. | 920 lb. |
| Max Wt./Per/Mo/GR | 1,900 lb. | 1,300 lb. | 1,200 lb. |
| Total Wt. Per Cap | 8/1,128 lb. | 4/564 lb. | 4/564 lb. |
| Aluminum - 5052 Gauge | 0.100 | 0.100 | 0.100 |
| Maximum HP | 115 | 90 | 70 |
| Overall Package Length | 25' | 23' 6" | 23' 6" |
| BackTrack Trailer Model | AWHD20 | AWHD17 | AWHD17 |

* Higher horsepower rating requires hydraulic steering purchase
 * Overall package length includes trailer and engine
 * All measurements are approximate
 * Photos may include optional equipment

STANDARD FEATURES

Hydro-Dynamic Hull
 All-Welded Construction
 Longitudinal Rib Construction
 Unibody Injected Foam Construction
 Xpress Camo Paint w/Xtreme Coat Liner
 Xpress Duck Boat Graphics
 Xpress Duck Boat Accessory Rail
 Recessed Throttle Bracket
 Rear Deck Storage Boxes
NEW Stainless Boarding Step
 Full Length Lockable Rod Box
 2 Fold Down Fishing Seats w/13" Extensions
 8 Gauge Trolling Motor Harness
 Aerated Livewell in Rear Deck
 Bilge Pump
 Fiberglass Console & Tinted Windshield
 Lockable Front Deck Storage
 Humminbird PiranhaMax 4 Graph
 Minn Kota 45 Edge Trolling Motor
 Fold Down Driver & Passenger Seats w/Storage Box
 Running Lights
 Speed, Tach & Fuel Gauges
 BackTrack Single Axle Aluminum Trailer



Special thanks to Rothwell Marine



XPLORER BASS SERIES

FISH, FOWL OR FUN XCITEMENT

[XP200 / XP180 / XP170]

When searching for the most complete side console solution for hunting and fishing, look no further than the cornerstone of our fishing lineup, the Xplorer Bass Series. The Hydro-Dynamic Hull has been designed and perfected by Xpress Boats and offers you that added sense of comfort knowing you are structurally secure to go just about anywhere you want or need to go. Unibody injected foam exceeding Coast Guard standards has set a standard for everyone else to follow. The Xplorer Bass Series is the right boat for any application, fish, or fowl. Why settle for anything less?





Special thanks to Adventure Marina

INSHORE, NEARSHORE OR OFFSHORE,

WE'VE GOT YOU COVERED



XPRESS BAY SERIES

[EXCLUSIVE R BAY BOAT / X-BAY SERIES / HYPER-LIFT BAY SERIES
HYPER-LIFT H210/H190 BAY / SHALLOW WATER BAY SERIES / XPLOER CC SERIES]

Xpress Bay Boats are one of the most popular lines of bay boats on the market today and the number one selling 20-foot aluminum bay boat, period. Xpress Bay Boats deliver exceptional design and performance, ensuring you a lifetime of exciting memories. Whether it's fresh or salt, an Xpress Bay Boat provides the versatility to make your next trip memorable. Settle for nothing less than the best!

STANDARD FEATURES

XR Hyper-Lift Hull
All-Welded Construction
Longitudinal Rib Construction
Unibody Injected Foam Construction
White Paint w/Xtreme Coat Liner
SeaDek Console Top
SeaDek Step Pad on Bow
Dash Panel w/Digital Switching
Logo Badge
Lights in Livewell and Rod Boxes
Tackle Storage Behind Console Backrest
SeaDek Pads in Rod Boxes
Center Console w/Toekick Feature
3 Pedestal Bases Across Front Deck
2 Fold Down Fishing Seats w/13" Extensions
2 Built-in Lockable Rod Boxes
6 Gauge Trolling Motor Harness
Stainless Leaning Post w/Out Foot Rest
Stainless Steering Wheel w/Knob
Removable Backrest w/Bow Cushions
Large Bay Center Console w/Baitwell, Fold Down Grabrail,
Removable Windshield, Seat Cushion & Back-Rest Cushion
Auto Bilge Pump
Aerated Livewell in Front Deck
Remote Battery Switch
Thru Transom Hydraulic Hose Fittings
8 Stainless Steel Rod Holders on Console
2 Stainless Steel Cup Holders on Console
2 Rear Deck Jump Seats
Latches for Jump Seat Lids
3 Bank Charger
Stainless Floor Drain Covers
Humminbird Xplore 9 CML+
Minn Kota Riptide 80WR
Trolling Motor Slide Bracket & Plug
Running Lights
Uflex Hydraulic Steering (Greater than 150HP)
10" Jack Plate
BackTrack 6" Frame Xtreme Trailer



XR21B

Shown w/optional
SeaDek & Power-Poles

| | |
|--------------------------------|-------------|
| | XR21 |
| Length | 21' 2" |
| Bottom | 67" |
| Beam | 93" |
| Sides | 22" |
| Transom Height | 22" |
| Fuel Tank Capacity | 36 gal. |
| Approx. Weight | 1,865 lb. |
| Max Wt./Per/Mo/GR | 1,830 lb. |
| Total Wt. Per Cap | 7/965 lb. |
| Aluminum - 5052 Gauge | 0.125 |
| Maximum HP | 200 |
| Overall Package Length | 28' 4" |
| BackTrack Trailer Model | AW21LE |

- Overall package length includes trailer and engine
- All measurements are approximate
- Photos may include optional equipment

SeaDek

ALL-NEW

XCLUSIVE R BAY BOAT

BUILT FOR FISHING, READY FOR FAMILY

[XR21 BAY]



The all-new XR21 Bay is your ticket to unforgettable days on the water. Engineered with our newly updated all-welded aluminum XR Hyper-Lift hull, it delivers the speed, strength, and handling serious anglers demand, plus the space and comfort families love. From chasing redfish to cruising with the kids, the XR21 adapts to every adventure. With lightning-fast hole shots, a smooth, dry ride, and unmatched durability, it's built for every pursuit. Expansive casting decks, flush-mounted electronics, ample storage, and premium finishes make every trip comfortable and fun. The XR21 Bay is your all-in-one boat for life on the water. Fish Hard. Play Hard. Live Xpress.



 **YAMAHA**



| | X23B LOUNGE | X23B LOUNGE DUAL | X23B |
|--------------------------------|--------------------|-------------------------|--------------|
| Length | 23" | 23" | 23' |
| Bottom | 78" | 78" | 78" |
| Beam | 102" | 102" | 102" |
| Sides | 28" | 28" | 28" |
| Transom Height | 25" | 25" | 25" |
| Fuel Tank Capacity | 75 gal. | 75 gal. | 75 gal. |
| Approx. Weight | 2,296 lb. | 2,296 lb. | 2,296 lb. |
| Max Wt./Per/Mo/GR | 2,200 lb. | 2,200 lb. | 2,200 lb. |
| Total Wt. Per Cap | 10/1,500 lb. | 9/1,300 lb. | 10/1,500 lb. |
| Aluminum - 5052 Gauge | 0.125 | 0.125 | 0.125 |
| Maximum HP | 300 | 300 | 300 |
| Overall Package Length | 29' 5" | 29' 5" | 29' 5" |
| BackTrack Trailer Model | AWXB23 | AWXB23 | AWXB23 |

- 10" jack plate is recommended for all engines 150 HP and above
- Overall package length includes trailer and engine
- All measurements are approximate
- Photos may include optional equipment

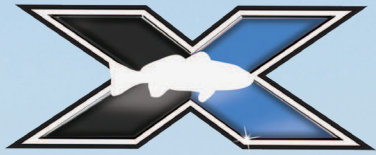
STANDARD FEATURES

Hyper-Lift Hull
All-Welded Construction
Longitudinal Rib Construction
Unibody Injected Foam Construction
Gulfsand Paint w/Xtreme Coat Liner
Raised 3D Chrome Xpress Logo
Self Bailing Hull
SeaDek Step Pad on Bow
2 Fold Down Fishing Seats w/13" Extensions
2 Built-in Lockable Rod Boxes
8 Gauge Trolling Motor Harness
NEW 3 Step Stainless Boarding Ladder
Alum Leaning Post w/Cushion and Foot Rest
NEW Large Bay Toe Kick Lounge Console w/Fish Box, Fold Down Grabrail, Removable Windshield, Seat Cushion & Back-Rest Cushion (X23B Lounge & X23B Lounge Dual)
Dash Panels w/Multifunction Gauge (Includes Hour Meter)

Center Console with Baitwell, Fold Down Grabrail, Removable Windshield, Seat Cushion & Back-Rest Cushion (X23B)
Aerated Livewell in Rear Deck
Thru Transom Hydraulic Hose Fittings
6 Rod Holders on Console (X23B Lounge & X23B Lounge Dual)
8 Rod Holders on Console (X23B)
2 Cupholders in Rear Deck, Cup Holder on Console & 1 on Bow
2 Rear Deck Jump Seats w/Storage Underneath
Oversized Jumpseat in Front Deck w/Storage Underneath
Latches for Jump Seat Lids
Full Length Walk Boards
Humminbird PiranhaMax 4 Graph
Minn Kota Riptide 46 Trolling Motor
Running Lights
Uflex Hydraulic Steering Greater than 150HP (2 w/Dual)
BackTrack 6" Frame Xtreme Trailer



Special thanks to Adventure Marine



X-BAY & X-BAY LOUNGE SERIES

BIG WATER XCITEMENT

[X23B LOUNGE / X23B LOUNGE DUAL / X23B]

Xpress Boats revolutionized the bay boat market with its X-Bay/X-Bay Lounge Series. Built with the same DNA that has propelled Xpress Boats Hyper-Lift Series to the top, the X-Bay/X-Bay Lounge Series is the leader in big water, big fish excitement. Whether relaxing during or after a full day of fishing, this multi-function craft is capable of running big water, chasing monster bull reds, or out with the entire family enjoying the scenery.



X23B LOUNGE
Shown w/optional
SeaDek

X23B LOUNGE DUAL
Shown w/optional
SeaDek

X23B
Shown w/optional
Appearance Pkg.

SeaDek



STANDARD FEATURES

Hyper-Lift Hull
All-Welded Construction
Longitudinal Rib Construction
Unibody Injected Foam Construction
Gulfsand Paint w/Xtreme Coat Liner
SeaDek Console Top
Xclusive Graphics
SeaDek Step Pad on Bow
Dash Panels w/Multifunction Gauge (Includes Hour Meter)
Logo Badge
Xtreme Liner in Front Deck & Rod Boxes
NEW Stainless Boarding Ladder
Tackle Storage Behind Console Backrest
SeaDek Pads in Rod Boxes
Coolers Under Jump Seats
Drop In Liner for Front Deck Storage
Walkboards w/Cupholder
Center Console w/Toekick Feature
NEW Stainless Steel Steering Wheel w/Logo
2 Fold Down Fishing Seats w/13" Extensions
2 Built-in Lockable Rod Boxes
8 Gauge Trolling Motor Harness
Alum Leaning Post w/Cushion and Foot Rest
Large Bay Center Console with Baitwell, Fold Down Grabrail, Removable
Windshield, Seat Cushion & Back-Rest Cushion
Aerated Livewell in Rear Deck
Thru Transom Hydraulic Hose Fittings (H22B & H24B)
8 Rod Holders on Console
4 Cup Holders on Console
2 Rear Deck Jump Seats with Storage Underneath
Latches for Jump Seat Lids
Stainless Floor Drain Covers
Humminbird PiranhaMax 4 Graph
Minn Kota Riptide 46 Trolling Motor
Running Lights
Uflex Hydraulic Steering Greater than 150HP (H24B Only)
BackTrack Single Axle Aluminum Trailer
BackTrack Tandem Axle w/ Brakes Aluminum Trailer (H24B Only)

| | H24B | H22B | H20B |
|--------------------------------|--------------|---------------|-------------|
| Length | 24' | 22' | 20' 3" |
| Bottom | 67" | 67" | 67" |
| Beam | 95" | 95" | 95" |
| Sides | 24" | 24" | 24" |
| Transom Height | 22" | 22" | 22" |
| Fuel Tank Capacity | 40 gal. | 40 gal. | 40 gal. |
| Approx. Weight | 1,659 lb. | 1,528 lb. | 1,436 lb. |
| Max Wt./Per/Mo/GR | 2,169 lb. | 2,000 lb. | 1,900 lb. |
| Total Wt. Per Cap | 10/1,410 lb. | 8/1,128 lb. | 8/1,128 lb. |
| Aluminum - 5052 Gauge | 0.125 | 0.125 | 0.125 |
| Maximum HP | 250 | 115-150*-200* | 115-150* |
| Overall Package Length | 30' 6" | 27' 10" | 25' |
| BackTrack Trailer Model | AW24 | AW22 | AW20 |

- *Higher horsepower rating requires hydraulic steering purchase
- 6" jack plate is required for all engines 150 HP and above
- Overall package length includes trailer and engine
- All measurements are approximate
- Photos may include optional equipment



H24B
Shown w/optional
Appearance Pkg.

H22B
Shown w/optional
SeaDek

H20B
Shown w/optional
SeaDek

SeaDek

HYPER-LIFT BAY SERIES

THE #1 SELLING 20' ALUMINUM BAY BOAT

[H24B / H22B / H20B]



Xpress Hyper-Lift Bay Series boats are the SOLUTION. Built on the foundation of our Hyper-Lift Hull, this dream craft packs performance, fishability, and comfort into one amazing cost-effective boat. In thin water or rough seas, you will not find a better solution. Whether this is your first bay boat or you intend to make this the last bay boat you buy, the Xpress Hyper-Lift Bay Series will satisfy!



| | H210B | H190B |
|-------------------------|-----------|-----------|
| Length | 21' | 18' 10" |
| Bottom | 67" | 67" |
| Beam | 93" | 93" |
| Sides | 22" | 22" |
| Transom Height | 22" | 22" |
| Fuel Tank Capacity | 36 gal. | 36 gal. |
| Approx. Weight | 1,600 lb. | 1,205 lb. |
| Max Wt./Per/Mo./GR | 1,700 lb. | 1,600 lb. |
| Total Wt. Per Cap | 6/950 lb. | 4/673 lb. |
| Aluminum 5052 Gauge | 0.125 | 0.100 |
| Maximum HP | 175 | 115 |
| Overall Package Length | 26' 2" | 24' 2" |
| BackTrack Trailer Model | AW21 | AW19 |

- Overall package length includes trailer and engine
- All measurements are approximate
- Photos may include optional equipment

STANDARD FEATURES

Hyper-Lift Hull
All-Welded Construction
Longitudinal Rib Construction
Unibody Injected Foam Construction
Choice of Gulfsand, White, Silver or Camo Paint
Xtreme Coat Liner
Raised 3D Chrome Xpress Logo
Xclusive Graphics
Dash Panels w/Multifunction Gauge (Includes Hour Meter)
Logo Badge
NEW Contoured Leaning Post Cushion
NEW Butt Seat Design
NEW Stainless Steering Wheel w/Logo
2 SeaDek Seat Pads on Rear Deck
1 Butt Seat w/Adjustable Pro Pole

1 Fold Down Fishing Seat w/13" Extension
8 Gauge Trolling Motor Harness
Alum Leaning Post w/Cushion and Foot Rest
Large Bay Center Console, Fold Down Grabrail, and Removable Windshield
Lift Arms on Front Deck Storage Lids
Aerated Livewell in Rear Deck
Aerated Baitwell in Rear Deck
6 Rod Holders on Console
2 Cupholders in Rear Deck
2 Cup Holders on Console
Humminbird PiranhaMax 4 Graph
Minn Kota Riptide 46 Trolling Motor
Running Lights
BackTrack Single Axle Aluminum Trailer



Special thanks to Ashley's Marine



HYPER-LIFT H210 & H190 BAY

PAD HULL XCITEMENT FOR THE BUDGET MINDED SPORTSMAN

[H210B / H190B]

Xpress Boats H210 Bay and H190 Bay are the ideal choice for any person looking for a high-performance, economically priced aluminum bay boat. With the famous Xpress Hyper-Lift Hull as the foundation, these center consoles pack performance, fishability, and comfort into one cost-effective boat. This 21 and 19-foot center console shares the same DNA as the #1 selling 20-foot aluminum bay boat on the market and will not disappoint. Xpress Boats will surely exceed your expectations because our aluminum boats maintain the highest resale value in the industry due to their attention to detail, innovative design, and unibody construction. Affordable adventure awaits!



H210B
Shown w/optional
Appearance Pkg.



H190B
Shown w/optional
SeaDek

SeaDek



STANDARD FEATURES

Hydro-Dynamic Hull w/Tunnel
All-Welded Construction
Longitudinal Rib Construction
Unibody Injected Foam Construction
Flotation Step Pods Welded on Transom
GulfSand Paint w/Xtreme Coat Liner
Xclusive Graphics
SeaDek Console Top
Dash Panels w/Multifunction Gauge (Includes Hour Meter)
Logo Badge
Xtreme Coat Liner in Front Deck & Rod Boxes
SeaDek Pads in Rod Boxes
SeaDek Step Pad on Bow
Cooler Under Starboard Jump Seat
Drop In Liner For Front Deck Storage
2 Fold Down Fishing Seats w/13" Extensions
2 Built-in Lockable Rod Boxes
8 Gauge Trolling Motor Harness
Alum Leaning Post w/Cushion and Foot Rest
NEW Large Bay Center Console with Baitwell, Fold Down Grabrail,
Removable Windshield, Seat Cushion & Back-Rest Cushion
Aerated Livewell in Rear Deck
6 Rod Holders on Console
Cup Holder on Console
2 Rear Deck Jump Seats w/Storage Underneath
Latches for Jump Seat Lids
Stainless Floor Drain Covers
Humminbird PiranhaMax 4 Graph
Minn Kota Riptide 46 Trolling Motor
Running Lights
Uflex Hydraulic Steering Greater than 150HP (SW22B)
BackTrack Single Axle Aluminum Trailer

| | SW22B | SW20B |
|--------------------------------|-------------|-------------|
| Length | 22' | 20' |
| Bottom | 67" | 67" |
| Beam | 95" | 95" |
| Sides | 24" | 24" |
| Transom Height | 22" | 22" |
| Fuel Tank Capacity | 28 gal. | 28 gal. |
| Approx. Weight | 1,528 lb. | 1,436 lb. |
| Max Wt./Per/Mo/GR | 2,000 lb. | 1,772 lb. |
| Total Wt. Per Cap | 8/1,128 lb. | 8/1,128 lb. |
| Aluminum - 5052 Gauge | 0.100 | 0.100 |
| Maximum HP | 175 | 115-150* |
| Overall Package Length | 27'10" | 25' |
| BackTrack Trailer Model | AWHD22 | AWHD20 |

- *Higher horsepower rating requires hydraulic steering purchase
- Overall package length includes trailer and engine
- All measurements are approximate
- Photos may include optional equipment



SeaDek

SHALLOW WATER BAY SERIES

THIN WATER, HIGH-PERFORMANCE

[SW22B / SW20B]



Xpress Shallow Water Bay Series crafts feature a hull design that allows the adventurous angler to go farther in the shallows where the big ones think they are safe. This design performs flawlessly navigating open water and provides a nominal draft capable of venturing deep into the marsh. The Shallow Water Bay Series is Xpress tough.



Special thanks to Gulf to Lake Marine & Trailers

| | XP20CC | XP18CC |
|-------------------------|-------------|-----------|
| Length | 20' 3" | 18' |
| Bottom | 67" | 60" |
| Beam | 95" | 86" |
| Sides | 24" | 24" |
| Transom Height | 22" | 21" |
| Fuel Tank Capacity | 18 gal. | 18 gal. |
| Approx. Weight | 1,261 lb. | 1,045 lb. |
| Max Wt./Per/Mo/GR | 1,900 lb. | 1,300 lb. |
| Total Wt. Per Cap | 8/1,128 lb. | 4/564 lb. |
| Aluminum - 5052 Gauge | 0.100 | 0.100 |
| Maximum HP | 115 | 90 |
| Overall Package Length | 25' | 23' 6" |
| BackTrack Trailer Model | AWHD20 | AWHD17 |

- *Higher horsepower rating requires hydraulic steering purchase
- Overall package length includes trailer and engine
- All measurements are approximate
- Photos may include optional equipment

STANDARD FEATURES

Hydro-Dynamic Hull
 All-Welded Construction
 Longitudinal Rib Construction
 Unibody Injected Foam Construction
 Gulf Sand Paint w/Xtreme Coat Liner
 2 Fold Down Fishing Seats w/13" Extensions
 8 Gauge Trolling Motor Harness
 Aerated Livewell in Rear Deck
 Bilge Pump
NEW Stainless Boarding Step
 Fiberglass Console (XP18CC) w/Aerated Baitwell (XP20CC)
 Cushion Set for Console w/Livewell (XP20CC Only)
 Fold Down Grabrail & Removable Tinted Windshield
 6 Rod Holders on Console (XP20CC)
 Lockable Front Deck Lid Storage
 Humminbird PiranhaMax 4 Graph
 Minn Kota Riptide 46 Trolling Motor
 Jump Seats in Rear Deck (XP20CC)
 Leaning Post w/Cushion
 Running Lights
 Multifunction Gauge (Includes Hour Meter)
 BackTrack Single Axle Aluminum Trailer





XPLORER CC SERIES

DESIGNED TO BE TOUGH, PERIOD

[XP20CC / XP18CC]

Xplorer CC (Center Console) Series boats are designed to be tough. Capable of running shallow deep in the marsh chasing giant gators, or with full throttle confidence and sports car performance in open water. Fresh or saltwater, this is an American-made, blue-collar, everyday hard-working center console bay boat solution with a ton of excitement built in!



Special thanks to Ashley's Marine



| SKIFF 185 | |
|-------------------------|-----------|
| Length | 18' 5" |
| Bottom | 72" |
| Beam | 83" |
| Sides | 16" |
| Transom Height | 21" |
| Fuel Tank Capacity | 18 gal. |
| Approx. Weight | 1,170 lb. |
| Max Wt./Per/Mo/GR | 1,280 lb. |
| Total Wt. Per Cap | 4/655 lb. |
| Aluminum - 5052 Gauge | 0.100 |
| Maximum HP | 115 |
| Overall Pkg. Length | 23' 6" |
| BackTrack Trailer Model | AWSK18 |

- Higher horsepower rating requires hydraulic steering purchase*
- Overall package length includes trailer and engine
- All measurements are approximate
- Photos may include optional equipment



STANDARD FEATURES

| | |
|--|---|
| Skiff Hull | Black Bay Steering Wheel |
| All-Welded Construction | Fiberglass Console w/Battery Storage and Console Cushions |
| Longitudinal Rib Construction | 2 Black Grab Handles on Console |
| Unibody Injected Foam Construction | 4 Stainless Cleats |
| White Xtreme Coat w/Choice of Hull Color | Lockable Front Deck Lid Storage |
| Liners in Rear Storage Boxes | NEW Leaning Post w/Contoured Cushion |
| 4" Atlas Hydraulic Micro Jack Plate | Tilt Steering |
| Aerated Livewell in Rear Deck | Sharkey Running Lights |
| Auto Bilge Pump | Humminbird Helix 5 Graph |
| Under Deck Rod Holders | Multifunction Gauge (Includes Hour Meter) |
| 2 Rear Deck Storage Boxes | BackTrack Single Axle Aluminum Trailer |
| NEW Stainless Boarding Step | |

Special thanks to Ashley's Marine

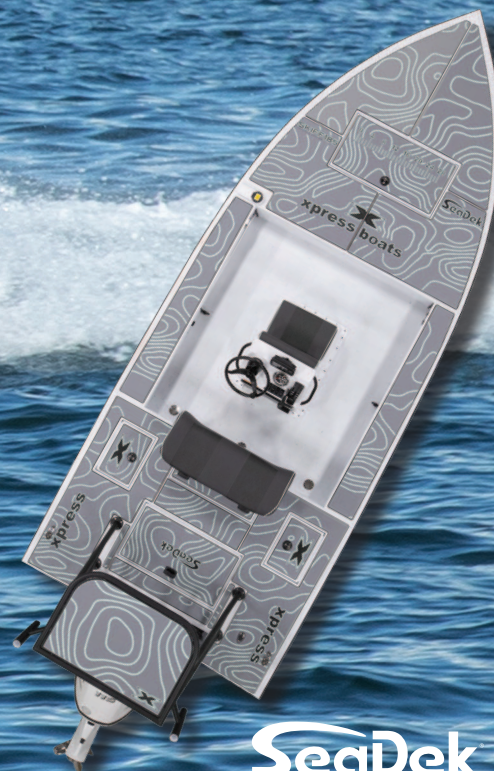


XPRESS SKIFF

FLATS STEALTH WITH BIG WATER DURABILITY

[SKIFF 185]

Whether running rivers, bays or across oyster bars, the shallow draft, fishability, innovative design and stealth of the Xpress Skiff will get you ready for your next shallow water showdown. The Skiff Hull offers supreme buoyancy, enabling you to quietly pole in just inches of water. The all-welded aluminum construction, supported by a longitudinal rib system and unibody injected foam, makes this the most durable platform on the market. The Skiff 185 provides you with the best return on your investment. There is absolutely no need to spend twice as much on a fiberglass craft when you have the strength and durability of an Xpress Skiff. Don't settle for anything less than Xpress!



SKIFF 185

Shown w/optional
Appearance Package

SeaDek





TARGET SCHOOLS OF SLABS IN *STYLE, COMFORT, AND SAFETY*



XPRESS CRAPPIE

[HYPER-LIFT CRAPPIE]

Crappie fishing has exploded over the past decade and tournament trails have followed suit. Xpress Boats has dedicated an entire series to the crappie angler, whether tournament or leisure. Our all-welded aluminum boats are the finest built, finest performing crappie boats on the market. The Xpress Boats Hyper-Lift Hull design leads the way in performance, handling, and comfort, and our boats are well-appointed so you have the features and performance you need for the tournament trail or a weekend on the lake.

| | H20C | H18C | H17C |
|--------------------------------|-----------|-----------|-----------|
| Length | 20' | 17' 10" | 17' |
| Bottom | 67" | 67" | 67" |
| Beam | 93" | 93" | 93" |
| Sides | 22" | 22" | 22" |
| Transom Height | 22" | 22" | 22" |
| Fuel Tank Capacity | 36 gal. | 18 gal. | 18 gal. |
| Approx. Weight | 1,400 lb. | 1,340 lb. | 1,325 lb. |
| Max Wt./Per/Mo/GR | 1,550 lb. | 1,400 lb. | 1,300 lb. |
| Total Wt. Per Cap | 4/700 lb. | 4/675 lb. | 4/675 lb. |
| Aluminum - 5052 Gauge | 0.125 | 0.125 | 0.125 |
| Maximum HP | 175 | 115 | 90 |
| Overall Pkg. Length | 25' | 23' 2" | 22' 2" |
| BackTrack Trailer Model | AW20-A | AW18-A | AX17-A |

STANDARD FEATURES

Hyper-Lift Hull
All-Welded Construction
Longitudinal Rib Construction
Unibody Injected Foam Construction
Choice of Charcoal, White, Silver, Gulfsand or Camo Paint
Xtreme Coat Liner
Seadek Liner on Decks
Soft Sided Cooler w/Logo
X-Wing Fiberglass Console & Tinted Windshield
Recessed Trolling Motor Foot Well w/SS Tool Holder
Recessed Bow Light
2 Aero X Mesh Seats w/13" Extensions
Xtreme Coat Under Lids and in Seat Box
NEW Stainless Boarding Step

Front Deck Lockable Storage Boxes w/Liners
2 Rear Deck Boxes w/Tackle Tray Storage
8 Gauge Trolling Motor Harness
Aerated Livewell in Rear Deck
Bilge Pump
Bucket Driver and Passenger Seats w/Storage Box
SeaDek Center Seat
Humminbird Helix 5 Graph
Minn Kota 45 Edge Trolling Motor
2 Bank Charger
6" Jackplate (H20C Only)
Baystar Hydraulic Steering (H20C Only)
Lockable Rod Box
Tach, Trim, Fuel and Water PSI Gauges
BackTrack Single Axle Aluminum Trailer w/Alum Wheels

- Overall package length includes trailer and engine
- All measurements are approximate
- Photos may include optional equipment



HYPER-LIFT CRAPPIE

YOUR SOLUTION FOR AFFORDABLE CRAPPIE ADVENTURE

[H20C / H18C / H17C]



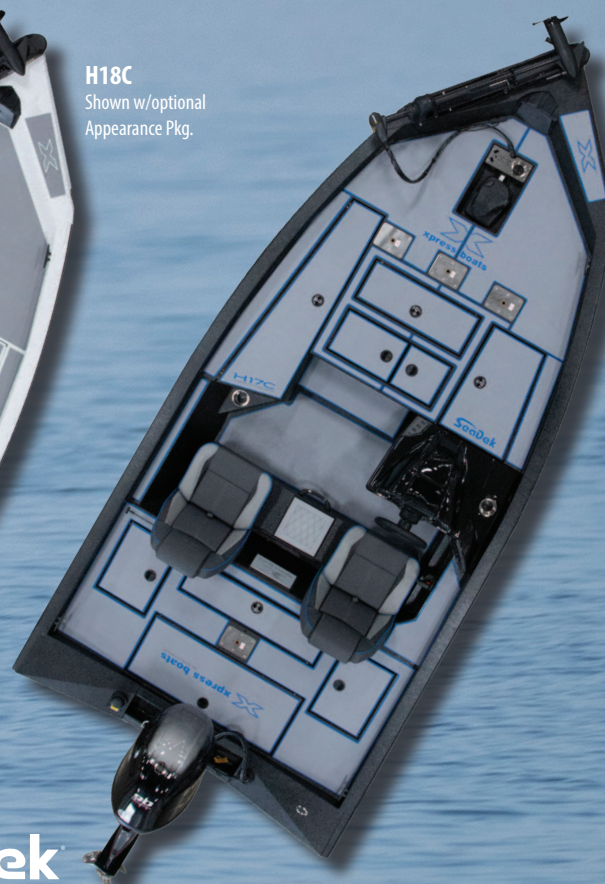
Xpress Boats Hyper-Lift Crappie is available in a 17, 18, and 20-foot option. This high-performance, economically priced, crappie-catching machine is loaded to the top of the livewell with must-have features, starting with new, ergonomically-designed sport seating, expanded front deck, with 3-across seating, increased storage capacity, and new drop-in liners. This fast, dry hull design is your solution to getting to the brush pile and back quickly and safely. Whether competing in a tournament or a weekend angler, the Hyper-Lift Crappie by Xpress is your ticket to affordable crappie adventure.



H20C
Shown w/optional
Appearance Pkg.



H18C
Shown w/optional
Appearance Pkg.



H17C
Shown w/optional
Appearance Pkg.

SeaDek





LIMITLESS OPPORTUNITIES FOR WATERFOWL PURSUIT PERFECTION



XPRESS HUNTING SERIES

[EXCLUSIVE DUCK BOAT / BAYOU SERIES / HD DUCK BOAT / DBX SERIES]

Xpress Boats Hunting Series offers limitless opportunities to pursue anything you deem exciting! Fish or fowl, go just about anywhere with the confidence of knowing you have made the finest choice in high-performance all-welded aluminum pursuit boats. With unmatched construction, unibody foam injected hull to exceed Coast Guard flotation standards and countless other assets. We guarantee that excitement has been built into every one of our boats, it's just up to you to discover the limitless possibilities.

"Having the good fortune to spend a great deal of time in and around a lot of boats, I've learned to appreciate quality, performance and aesthetics. I have a choice which boat I can run, that choice is Xpress. From bow to stern, it is obvious Xpress strives to build a boat that is tough as nails, handles like a dream, and looks great on the water! Chosen by champions, check one out, you'll be glad you did!"

- JIM RONQUEST: WORLD DUCK CALLING CHAMPION / VP OF DEVELOPMENT AT DRAKE WATERFOWL



CHARLIE

| | |
|--------------------------------|-------------------------|
| Length | X18DB 18' 10" |
| Bottom | 63" |
| Beam | 88" |
| Sides | 22" |
| Transom Height | 21" |
| Approx. Weight | 990 lb. |
| Max Wt./Per/Mo/GR | 1,327 lb. |
| Total Wt. Per Cap | 5/699 lb. |
| Aluminum - 5052 Gauge | 0.125 |
| Maximum HP | 90 |
| Overall Pkg. Length | 22' 6" |
| BackTrack Trailer Model | AWDB19 |

- Overall package length includes trailer and engine
- All measurements are approximate
- Photos may include optional equipment

STANDARD FEATURES

Hyper-Lift Hull
 All-Welded Construction
 Longitudinal Rib Construction
 Unibody Injected Foam Construction
 Xpress Camo Paint & Xtreme Coat Liner
 Step Pod Transom w/SeaDek
 Xpress Duck Boat Accessory Rail
 Full Aluminum Floor
 3 Pedestal Bases on Front Deck
 Livewell in Front Deck
 Front Deck w/Lockable Storage
 Welded-in Lockable Gun/Rod Box
 Welded-in Storage Tray on Starboard Side
 SeaDek Liner in Gun/Rod Box
 Remote Battery Switch
 8 Gauge Trolling Motor Harness w/Plug
 Running Lights
 Bilge Pump
 Xpress Raised 3D Black Logo
 3 L.E.D. Bow Lights w/Shroud
 2 Transom L.E.D. Lights
 RGB Under Rail Lights
 6" Vance Kick Plate
 BackTrack Single Axle Aluminum Trailer

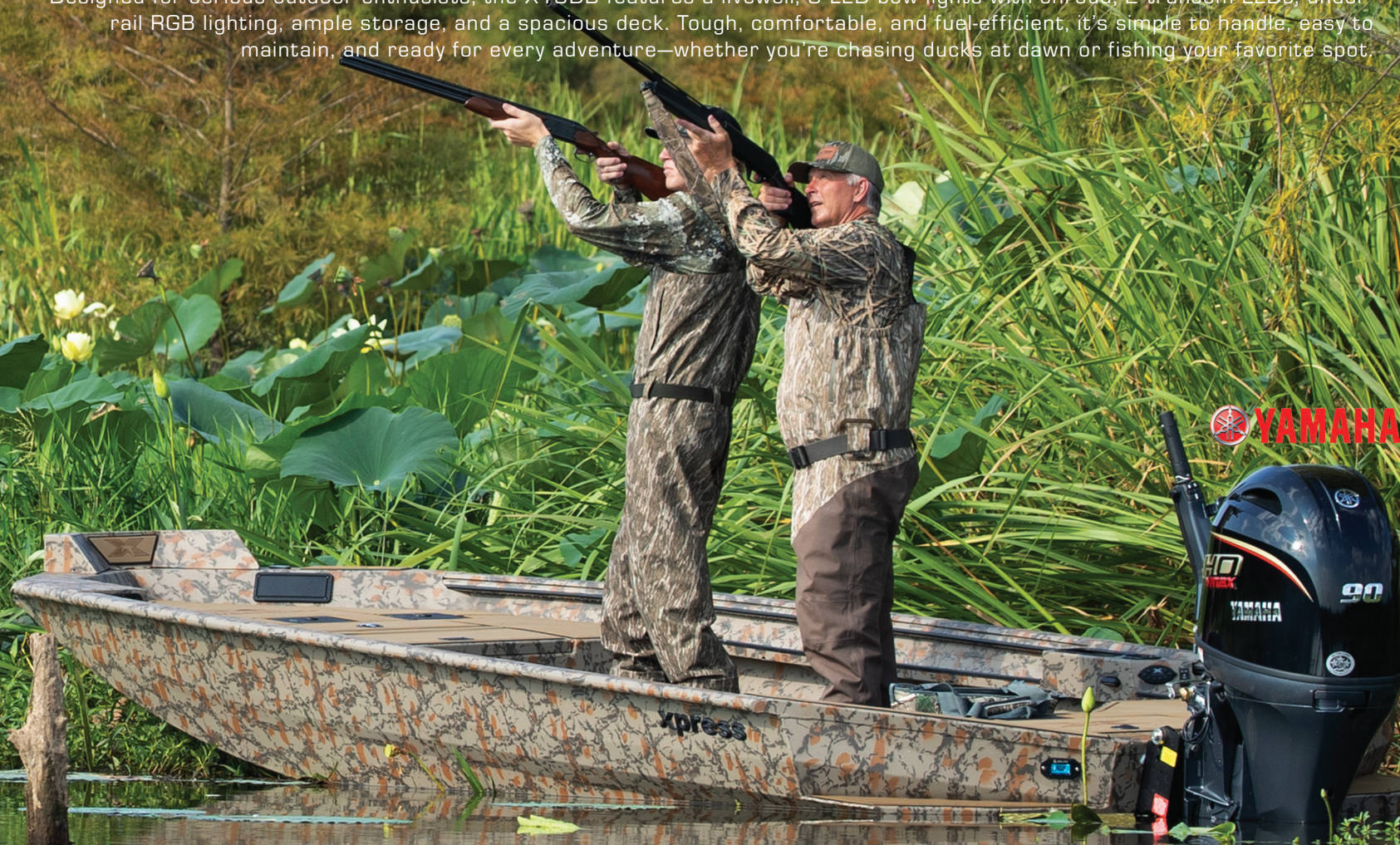


ALL-NEW XCLUSIVE DUCK BOAT

BUILT FOR HUNTERS, DESIGNED FOR ADVENTURE

[X18DB]

The Xpress X18DB isn't just a duck boat—it's a hunting partner built for any environment. Its Hyper-Lift Hull delivers lightning-fast performance, sharp turns, and a smooth, dry ride from shallow marshes to open water. The Step-Pod Transom with SeaDek pad offers a safe, slip-resistant step, while the Yamaha outboard provides quiet, reliable power for stealthy approaches. Designed for serious outdoor enthusiasts, the X18DB features a livewell, 3 LED bow lights with shroud, 2 transom LEDs, under-rail RGB lighting, ample storage, and a spacious deck. Tough, comfortable, and fuel-efficient, it's simple to handle, easy to maintain, and ready for every adventure—whether you're chasing ducks at dawn or fishing your favorite spot.



Special thanks to Rothwell Marine



| | BAYOU 180 | BAYOU 180CC |
|-------------------------|-----------|-------------|
| Length | 18' | 18' |
| Bottom | 50" | 50" |
| Beam | 68" | 68" |
| Sides | 24" | 24" |
| Transom Height | 20" | 20" |
| Approx. Weight | 630 lb. | 630 lb. |
| Max Wt./Per/Mo/GR | 1,206 lb. | 1,124 lb. |
| Total Wt. Per Cap | 5/705 lb. | 5/705 lb. |
| Aluminum - 5052 Gauge | 0.100 | 0.100 |
| Maximum HP | 40 | 40 |
| BackTrack Trailer Model | AWB18 | AWB18 |

- Overall package length includes trailer and engine
- All measurements are approximate
- Photos may include optional equipment

STANDARD FEATURES

Bayou Mud Hull
 All-Welded Construction
 Longitudinal Rib Construction
 Unibody Injected Foam Construction
 Step Pod Transom
 Xpress Camo Paint w/Xtreme Coat Liner
 Digital Switching
 Aluminum Center Console w/Blk SS Steering Wheel & Grab Handle (Bayou 180CC Only)
 Front Deck Storage
 RGB Under Rail Lights
 DB Accessory Rail
 Rodbox Storage
 8 Gauge Trolling Motor Harness
 Xpress Raised 3D Black Logo
 3 L.E.D. Bow Lights w/Shroud
 2 Transom L.E.D. Lights
 2 - 6" L.E.D. Lights Built into Bow Running Lights
 Smooth Bottom w/Rolled Sides for Mud Release
 Welded-in Aluminum Floor
 BackTrack Single Axle Aluminum Trailer



Special thanks to Grosse Savanna Lodge

ALL-NEW BAYOU SERIES

WHEN YOU HAVE TO GO TO THEM

[BAYOU 180 / BAYOU 180CC]



The all-new Bayou Series is built for the backwater. When the road ends, the water gets shallow, and you need something that will get you to where you can't get, the Bayou Series takes over. Purpose-built for the GatorTail motor, the Bayou 180 and Bayou 180CC are all-welded, all-aluminum machines engineered to power through the marsh, timber, and backwater with confidence. The Bayou 180 and 180 CC are tough, simple, and ready to hunt. Its stable platform, ample floor space, and welded-in gun boxes gives you the space you need for decoys, gear, and your crew, while the unshakable all-welded aluminum hull handles the punishment of stumps, logs, and shallow runs. The all-new Bayou Series allows you to discover the freedom to go where others can't.



Bayou 180
Shown w/optional
SeaDek



Bayou 180CC
Shown w/optional
SeaDek



| | |
|--------------------------------|---------------|
| Length | HD16DB |
| Bottom | 16' |
| Beam | 51" |
| Sides | 78" |
| Transom Height | 24" |
| Approx. Weight | 21" |
| Max Wt./Per/Mo/GR | 600 lb. |
| Total Wt. Per Cap | 1,065 lb. |
| Aluminum - 5052 Gauge | 4/564 lb. |
| Maximum HP | 0.100 |
| Overall Pkg. Length | 50 |
| BackTrack Trailer Model | 20' 6" |
| | AWHD16 |

- Overall package length includes trailer and engine
- All measurements are approximate
- Photos may include optional equipment

STANDARD FEATURES

Hydro-Dynamic Hull
 All-Welded Construction
 Longitudinal Rib Construction
 Unibody Injected Foam Construction
 Xpress Camo Paint & Xtreme Coat Liner
 "K" Style Rear Deck
 Lighted Switch Panel
 Livewell in Front Deck
 Full Aluminum Floor
 Lowered Front Deck w/Lockable Storage
 Lowered Welded-in Lockable Gun Box
 Enclosed Rear Deck
 Xpress Duck Boat Accessory Rail
 8 Gauge Trolling Motor Harness
 Running Lights
 Bilge Pump
 Welded-on Center Keel
 Xpress Duck Boat Graphics
 BackTrack Single Axle Aluminum Trailer





HD DUCK BOAT

THE STANDARD, THE WORKHORSE, THE ORIGINAL

[HD16DB]

This is the one, the standard, the workhorse, the original HD Duck Boat. Blue-collar, all American craftsmanship built into each and every HD Duck Boat. Performance, durability and years of experience building the first all-welded aluminum boat answers any questions ever posed. We build the excitement into each one of these, it's up to you how you get it out!



| | | |
|-------------------------|----------------|----------------|
| | HD16DBX | HD15DBX |
| Length | 16' | 15' |
| Bottom | 51" | 46" |
| Beam | 78" | 66" |
| Sides | 24" | 21" |
| Transom Height | 21" | 21" |
| Approx. Weight | 600 lb. | 545 lb. |
| Max Wt./Per/Mo/GR | 1,065 lb. | 850 lb. |
| Total Wt. Per Cap | 4/564 lb. | 3/423 lb. |
| Aluminum - 5052 Gauge | 0.100 | 0.080 |
| Maximum HP | 50 | 40 |
| Overall Pkg. Length | 20' 6" | 19' 6" |
| BackTrack Trailer Model | AWHD16 | AWHD15 |

STANDARD FEATURES

Hydro-Dynamic Hull
All-Welded Construction
Longitudinal Rib Construction
Unibody Injected Foam Construction
Xpress Camo Paint & Xtreme Coat Liner
"K" Style Rear Deck
Transom Step
Full Aluminum Floor
Lowered Front Deck w/Lockable Storage
Enclosed Rear Deck
Xpress Duck Boat Accessory Rail
Welded-on Center Keel
Xpress Duck Boat Graphics
BackTrack Single Axle Aluminum Trailer

- Overall package length includes trailer and engine
- All measurements are approximate
- Photos may include optional equipment



"Growing up duck hunting and fishing here in the heart of the Grand Prairie and spending time in a boat is second nature. I have a choice, and my choice is Xpress Boats. Great performance, amazing handling characteristics in shallow and deep water, and superb structural integrity, all wrapped up in a great-looking package."

- JOHN STEPHENS: PRESIDENT AT RNT CALLS

RNT-V

Xpress Boats is a proud sponsor of RNT-V
featured on the Sportsman's Channel
and MyOutdoorTV

DBX SERIES

DESIGNED BY WATERFOWLERS FOR WATERFOWLERS

[HD16DBX / HD15DBX]



We may call this a duck boat, but it's much more than that. Designed by waterfowlers for waterfowlers, you are sure to savor the performance, durability, and years of experience built into each 15 and 16-foot DBX series boat. The DBX is sure to satisfy your craving to go further and deeper into the timber. Discover nothing but the best with Xpress.



HD16DBX

HD15DBX

SHOWN WITH OPTIONAL
XTREME CONVENIENCE STATION



| XP200 CATFISH | |
|-------------------------|-------------|
| Length | 20' 3" |
| Bottom | 67" |
| Beam | 95" |
| Sides | 26" |
| Transom Height | 22" |
| Fuel Tank Capacity | 18 gal. |
| Approx. Weight | 1,261 lb. |
| Max Wt./Per/Mo/GR | 1,850 lb. |
| Total Wt. Per Cap | 8/1,128 lb. |
| Aluminum - 5052 Gauge | 0.100 |
| Maximum HP | 115 |
| Overall Pkg. Length | 25' |
| BackTrack Trailer Model | AWHD20 |

- *Higher horsepower rating requires hydraulic steering purchase
- Overall package length includes trailer and engine
- All measurements are approximate
- Photos may include optional equipment

STANDARD FEATURES

Hydro-Dynamic Hull
All-Welded Construction
Longitudinal Rib Construction
Unibody Injected Foam Construction
Xpress Camo Paint and Xtreme Coat Liner
High Pressure Wash Down in Front Catfish Livewell
Fold Down Driver & Passenger Seat w/Storage Box
2 Fold Down Fishing Seats w/13" Extensions
2 Pedestal Bases on Rear Deck
8 Gauge Trolling Motor Harness
Oval Baitwell in Rear Deck

Large Front Deck Catfish Livewell
Bilge Pump
Humminbird PiranhaMax 4 Graph
Minn Kota 45 Edge Trolling Motor
Lockable Side Rod Box
Speed, Tach & Fuel Gauges
Fiberglass Console w/Tinted Windshield
Xpress Duck Boat Accessory Rail
Xpress Duck Boat Graphics
BackTrack Single Axle Aluminum Trailer





XPLORER CATFISH

THE COMPLETE CATFISHING SOLUTION

[XP200 CATFISH]

If you chase big cats, you know it takes much more than a bobber and a big stick! Xpress Boats understands that. When we set out to design and build the finest all-welded aluminum, high-performance catfish boat, we knew you wouldn't settle for anything less than our best. We build big cat tournament excitement into every Xplorer Catfish boat we manufacture. The Xplorer Catfish is tough, it's rugged, and built to run shallow, deep, rough, or flat-out! From the same company that brought you the "Original" all-welded aluminum, this incredible catfish boat is backed with 60 years of experience and excitement.



XP200 CATFISH







Reliability Starts Here.®

THE PERFECT XCLUSIVE COMBINATION: XPRESS BOATS & YAMAHA OUTBOARDS



Xpress Boats has exclusively chosen Yamaha Outboards to complement their line of high-performance all-welded fishing and hunting boats.

Whether you're pursuing bass with your tournament partner, making a crisp morning run out to the timber chasing mallards, or cruising the bay to catch a limit of speckled trout, Yamaha Outboards give you turn-key reliability and the dependable efficiency you deserve.

The legendary reliability of Yamaha coupled with the performance and excitement that only Xpress Boats can offer equals the right motor, the right boat, the right decision.

BT BACKTRACK TRAILERS

Xpress Boats proudly offers an industry superior all-aluminum, all-welded trailer. Backtrack Trailers are second to none in quality, craftsmanship, and durability. Each trailer is custom built to cradle your Xpress boat with treated bunks to ensure that your investment is transported safely and securely. LED lighting and composite bunk covers are standard, and you can choose custom features like a spare tire with mount, brakes on the second axle of the tandem, and aluminum wheels.

| TRAILER | AXLE WEIGHT (LBS) | SPRING WEIGHT (LBS) | WHEEL SIZE |
|----------|-------------------|---------------------|------------|
| AWJ46 | 2000 | 2000 | 13" |
| AVB46 | 2000 | 2000 | 13" |
| AWJ50 | 3500 | 2500 | 13" |
| AWV50 | 3500 | 2500 | 13" |
| AWJ56 | 3500 | 3500 | 14" |
| AWB18 | 3500 | 2500 | 13" |
| AVB56 | 3500 | 3500 | 14" |
| AW17 | 3500 | 2500 | 14" |
| AW18 | 3500 | 3500 | 14" |
| AW19 | 3500 | 3500 | 14" |
| AW20 | 3500 | 3500 | 14" |
| AW21 | 3500 | 3500 | 14" |
| AW22 | 3500 | 3500 | 14" |
| AW24* | 3500 | 3500 | 14" |
| AWXB23* | 3500 | 3500 | 14" |
| AWSK18 | 3500 | 2500 | 13" |
| AWD16 | 3500 | 2500 | 13" |
| AWD18 | 3500 | 2500 | 13" |
| AWDB19 | 3500 | 2500 | 13" |
| AWHD15 | 2000 | 2000 | 13" |
| AWHD16 | 3500 | 2500 | 13" |
| AWHD17 | 3500 | 3500 | 13" |
| AWHD20 | 3500 | 3500 | 14" |
| AWHD22 | 3500 | 3500 | 14" |
| AW21LE** | 3500 | 3500 | 14" |

*Tandem Axle with Brakes on One Axle

** All Trailers come standard with Bias Tires. Bias Tires are for occasional use only.

If you plan to tow long distances or very frequently, Xpress Boats recommends that you upgrade to Radial Tires or to Aluminum Wheels which include Radial Tires.

| TRAILER | FOR USE WITH THESE BOAT MODELS | | | |
|---------|--------------------------------|----------------|--------------------------|---------------|
| AWSK18 | SKIFF18S | | | |
| AX17 | H17 | H17C | | |
| AW18 | H18 | H18C | | |
| AW19 | | X19PRO | | H190B |
| AW20 | H20 | H20C | | H20B |
| AW21 | | X21PRO | | H210B |
| AW22 | | | | H22B |
| AW24 | | | | H24B |
| AWXB23 | X23B | X23B-L | | |
| AWB18 | | | BAYOU 180 BAYOU 180CC | |
| AWD16 | | | XTS16 | |
| AWDB19 | | | | X18DB |
| AWHD15 | | | HD15DBX | |
| AWHD16 | | | HD16DBX | HD16DB |
| AWHD17 | | XP170 XP180 | XP18CC | |
| AWHD20 | | XP200 | XP20CC | XP200 CATFISH |
| AWHD22 | | | | SW20B |
| AW21LE | | | | SW22B |
| | | XR21 | | XR21B |



HIGH-PERFORMANCE HUBS 100,000 MILE LUBRICATION SYSTEM

Lithium complex fortified with rust and oxidation inhibitors, high-pressure additives provide a high degree of water resistance and washout properties.

- 100,000 mile or 6-year limited warranty* (no extra cost)
- "No Touch" lubrication system
- No need for periodic re-greasing or inspection
- Reusable dust cap is threaded for easy removal should the need occur

TRAILER OPTIONS

Lighted Logo Trailer Step (Both Sides)
 Aluminum Spare Tire and Mount
 15" Aluminum Spare Tire & Mount
 Aluminum Wheel Upgrade (Per Axle)
 Brakes on Second Axle of Tandem
 Single Axle w/ Brakes
 Galvanized Spare Tire and Mount
 Swing Away Tongue
 Tandem Axle w/ Brakes on One Axle
 Tandem Axle w/ Brakes on Both Axles
 15" Aluminum Wheel Upg. From 14" Alum
 18" Aluminum Spare Tire & Mount

All options may not be available on all trailer sizes.

TRAILER PACKAGES

XTREME TRAILER PACKAGE (REQ. TANDEM/BRAKE W/ALUM WHEELS)(H24B & H22B) 18" Aluminum Wheel Upg (2 Axles), Custom Tread Plate, Tandem Fenders, HD Jack Stand, Flush Mounted Tail Lights and Backup Lights, Ratchet Buckles, and SeaDek Fender Pads.

6" FRAME XTREME TRAILER PACKAGE (REQ. TANDEM BRAKE W/ ALUM WHEELS)

18" Aluminum Wheel Upg (2 Axles), Custom Tread Plate Tandem Fenders, HD Jack Stand, Flush Mounted Tail Lights and Backup Lights, Ratchet Buckles, and SeaDek Fender Pads.

SALTWATER TRAILER PACKAGE

Composite Bunk Covers and Upgraded Bow Roller.

XTREME TRAILER PACKAGE (H24B & H22B Only)

SINGLE AXLE TRAILER

TANDEM AXLE TRAILER

6" FRAME XTREME TRAILER PACKAGE (XR21, X21, X23B & XR21B Only)



SEADEK FENDER PAD

BACK-LIT TRAILER STEP

HEAVY DUTY JACK STAND

2026 PRODUCT OVERVIEW



XCLUSIVE R BASS BOAT



XR HYPER-LIFT

COLOR OPTIONS
THUNDERSTORM GREY
METALLIC CHARCOAL

HULL LENGTHS
21'2"

PACKAGES
APPEARANCE



XCLUSIVE PRO BASS SERIES



HYPER-LIFT

COLOR OPTIONS
GULF SAND
WHITE
SILVER
RED
METALLIC CHARCOAL
MIDNIGHT BLUE METALLIC
MOSS GREEN METALLIC
NAT GEAR
CAMO

HULL LENGTHS
21' • 19'

PACKAGES
6" FRAME XTREME TRAILER
XTREME TRAILER
HIGH PERFORMANCE
ELITE
LIMITED EDITION
APPEARANCE



HYPER-LIFT BASS SERIES



HYPER-LIFT

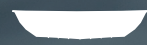
COLOR OPTIONS
GULF SAND
WHITE
SILVER
METALLIC CHARCOAL
CAMO

HULL LENGTHS
20' • 17'10" • 17'

PACKAGES
APPEARANCE
ELECTRONICS



XPLORER BASS SERIES



HYDRO-DYNAMIC

COLOR OPTIONS
CAMO
NAT GEAR
BROWN

HULL LENGTHS
20' • 18' • 17'

PACKAGES
SPORTSMEN



XCLUSIVE R BAY



XR HYPER-LIFT

COLOR OPTIONS
COASTAL BLUE
THUNDERSTORM GREY
SEAFOAM

HULL LENGTHS
21'2"

PACKAGES
SALTWATER TRAILER
APPEARANCE



X-BAY SERIES



X-BAY HYPER-LIFT

COLOR OPTIONS
GULF SAND
WHITE
SILVER
BAHAMA
SEAFOAM
RED
METALLIC CHARCOAL
MIDNIGHT BLUE METALLIC
MOSS GREEN METALLIC
NAT GEAR
CAMO

HULL LENGTHS
23'

PACKAGES
SALTWATER TRAILER
DUCK BOAT
BAY STAINLESS
XTREME BAY STAINLESS
REDFISH
XTREME REDFISH
MARSH
XTREME MARSH
APPEARANCE



HYPER-LIFT BAY SERIES



HYPER-LIFT

COLOR OPTIONS
GULF SAND
WHITE
SILVER
BAHAMA
SEAFOAM
RED
METALLIC CHARCOAL
MIDNIGHT BLUE METALLIC
MOSS GREEN METALLIC
NAT GEAR
CAMO

HULL LENGTHS
24' • 22' • 20'3"

PACKAGES
SALTWATER TRAILER
DUCK BOAT
BAY STAINLESS
XTREME BAY STAINLESS
REDFISH
XTREME REDFISH
MARSH
XTREME MARSH
APPEARANCE



HYPER-LIFT BAY H210/H190 SERIES



HYPER-LIFT

COLOR OPTIONS

GULF SAND
WHITE
SILVER
BAHAMA
SEAFOAM
CAMO

HULL LENGTHS
21' • 18'10"

PACKAGES
SALTWATER TRAILER

BAY STAINLESS
XTREME BAY STAINLESS
(H210 ONLY)
ELECTRONICS
APPEARANCE



SHALLOW WATER BAY SERIES



SHALLOW WATER

COLOR OPTIONS

GULF SAND
WHITE
SILVER
BAHAMA
SEAFOAM
RED
METALLIC CHARCOAL
MIDNIGHT BLUE METALLIC
MOSS GREEN METALLIC
NAT GEAR
CAMO

HULL LENGTHS
22' • 20'

PACKAGES
SALTWATER TRAILER
DUCK BOAT
BAY STAINLESS
XTREME BAY STAINLESS
REDFISH
XTREME REDFISH
MARSH
XTREME MARSH
APPEARANCE



XPLOER CC BAY SERIES



HYDRO-DYNAMIC

COLOR OPTIONS

GULF SAND
WHITE
SILVER
BAHAMA
SEAFOAM
RED
METALLIC CHARCOAL
MIDNIGHT BLUE METALLIC
MOSS GREEN METALLIC
NAT GEAR
CAMO

HULL LENGTHS
20'3" • 18'

PACKAGES
SALTWATER TRAILER
DUCK BOAT
BAY STAINLESS
(XP20CC ONLY)
XTREME BAY STAINLESS
(XP20CC ONLY)



SKIFF



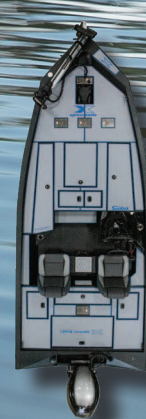
SKIFF HULL

COLOR OPTIONS

GULF SAND
WHITE
SILVER
BAHAMA
SEAFOAM
RED
METALLIC CHARCOAL
MIDNIGHT BLUE METALLIC
MOSS GREEN METALLIC
NAT GEAR
CAMO

HULL LENGTHS
18'5"

PACKAGES
SALTWATER TRAILER
DUCK BOAT
APPEARANCE



HYPER-LIFT CRAPPIE SERIES



HYPER-LIFT

COLOR OPTIONS

CHARCOAL
WHITE
SILVER
GULF SAND
NAT GEAR
CAMO

HULL LENGTHS
20' • 17'10" • 17'

PACKAGES
APPEARANCE
ELECTRONICS



XPLOER CATFISH



HYDRO-DYNAMIC

COLOR OPTIONS

GULF SAND
WHITE
SILVER
BAHAMA
SEAFOAM
RED
METALLIC CHARCOAL
MIDNIGHT BLUE METALLIC
MOSS GREEN METALLIC
NAT GEAR

HULL LENGTH
20'3"

PACKAGES
SPORTSMEN



HUNTING SERIES



BAYOU SERIES
18'



EXCLUSIVE DUCK BOAT
18'

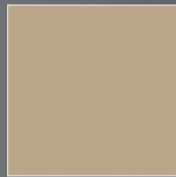


HD DUCK BOAT
16'



DBX SERIES
16' • 15'

COLOR OPTIONS



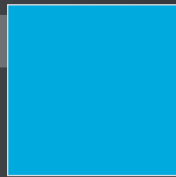
GULFSAND



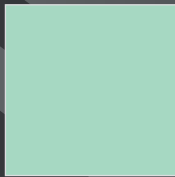
WHITE



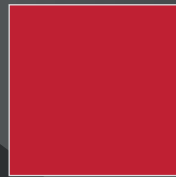
SILVER



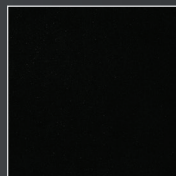
BAHAMA



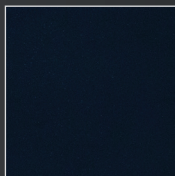
SEAFOAM



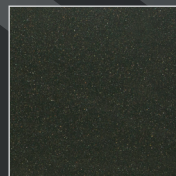
RED



METALLIC CHARCOAL



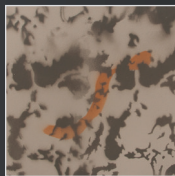
MIDNIGHT BLUE
METALLIC



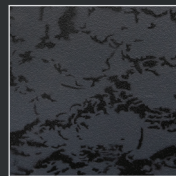
MOSS GREEN METALLIC



CAMO



NAT GEAR



BLACK NAT GEAR

XTREME COAT

Xtreme Coat is a proprietary, non-skid, durable, all-weather coating that is virtually maintenance-free, stain resistant and looks fantastic. There are imitators, but The Original Xtreme Coat can only be found on an Xpress.

OPTIONAL **SeaDek** MARINE PRODUCTS FLOOR LINERS

SeaDek available on limited models. See dealer for more information.

(For most models except Hyper-Lift Bass,
H210 Bay, H190 Bay, and Hyper-Lift Crappie)



DARK GREY/BLACK
(Available on X-Bass only)



CAPPUCCINO/BLACK
(Available on X-Bass only)



STORM GRAY/BLACK
(Not available on X-Bass)



CAPPUCCINO/BLACK
(Not available on X-Bass)

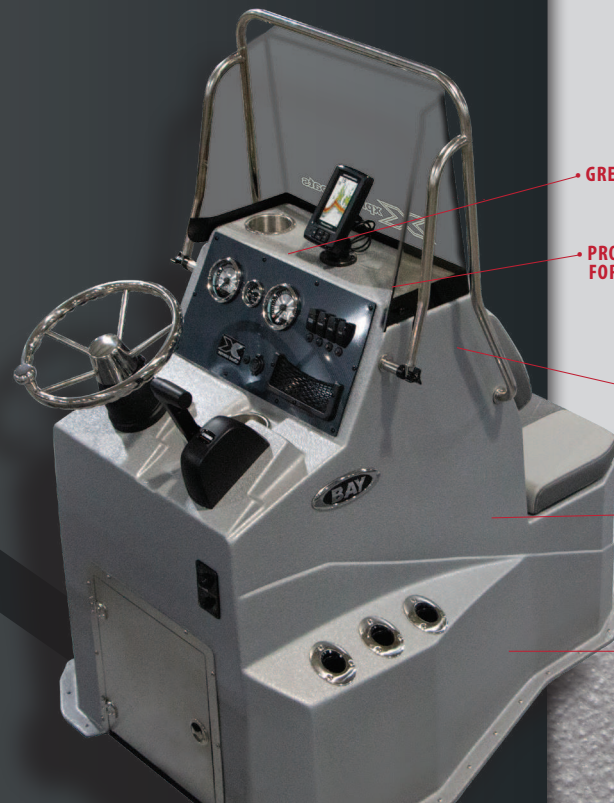
(For Hyper-Lift Bass, H210 Bay, H190 Bay,
and Hyper-Lift Crappie only)



STORM GRAY



CAPPUCCINO



xtp[®]
XTREME: TEXTURAL PROTECTANT

• GREAT LOOKING

• PROFITABLE
FOR DEALERS

• ARMOR TOUGH

• RETAINS BOAT
VALUE

• CLEANS UP
IN A SNAP

This proprietary, innovative, protective treatment exclusively by Xpress has been designed to solve an inherent deficiency in fiberglass that every manufacturer battles. XTP is designed to enhance the integrity of the console, eliminate chips and cracks, protect from harmful UV rays, and reduce the wear and tear from everyday rigors on the water. This cost-effective treatment retains the aesthetic beauty for years, complements and enhances the overall look and feel of our console, and is profitable to you, the owner. Consumers invest in our boats because of their performance, size, finish, and resale value. XTP has just added incremental gain to the resale value of our boats, creating a win-win for everyone. Bassmaster Elite Angler Bill Lowen notes he has spent thousands of dollars over the years in fiberglass repairs. XTP will keep his console showroom-ready when it is time to sell his boat. Kirt Senft, of A1 Marine, got a sneak peek of the new XTP and said, "I will never order another bay boat without XTP!"

2026 APPEARANCE PACKAGES

SeaDek®

Xpress Boats has been the leader in manufacturing the finest all-welded aluminum boats on the market since 1966. Our hunger for innovation is evident, from the all-welded longitudinal rib system to the revolutionary Hyper-Lift Hull. Generations have trusted us to provide the finest high-performance fishing solutions on the water, a trust we don't take lightly. The Appearance Packages we offer include a SeaDek floor liner with topo lines, matching seat trim and complementary hull graphics, available on limited bass, bay, skiff, and crappie models. For more information including an online gallery visit www.xpressboats.com/appearance-package or scan the code below.

Available colors for
the Xclusive R Bass
and Xclusive Pro
Bass Series



DARK GREY/RED



DARK GREY/LIME



DARK GREY/BLUE

Available colors
for the X-Bay,
Hyper-Lift Bay,
Shallow Water
Bay Series &
Skiff



SEAFOAM



RED



BAHAMA

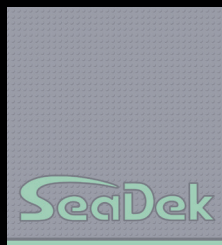


LIME



BLUE

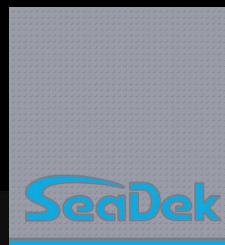
Available colors for
Hyper-Lift Bass,
H210/190 Bay &
Hyper-Lift Crappie
Series



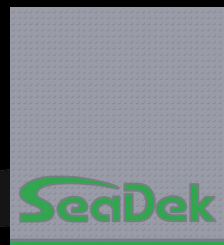
SEAFOAM



RED



BAHAMA



LIME



BLUE



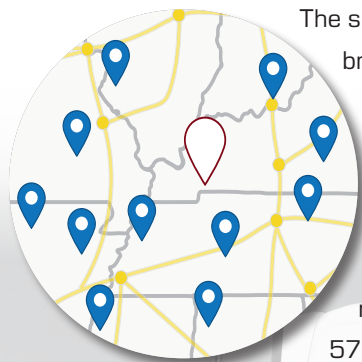
X23B

Shown w/optional
Storm Grey/Seafoam
Appearance Package





VALUED DEALER NETWORK



The success of Xpress Boats would not be possible if it were not for our network of over 95 authorized dealers throughout the continental U.S. who represent our brand! Our dealers are extremely knowledgeable of the various bass, bay, skiff, crappie, hunting, catfish and utility models they have in stock and can help guide you to a boat that best fits your needs. They will take the necessary time to ensure you fully understand your new boat's features, performance and capabilities. Dealers offer a wide variety of boating items to add that personal touch to your investment, and a full spectrum of services by trained technicians to keep your boat in top shape so you are always ready to hit the water. Xpress Boats authorized dealers will address your warranty questions to better understand your boating concerns and get you back on the water fast. Whether chasing fish or fowl, our loyal customers have relied upon their local dealers for sales and service for 57 years.

Are you ready to join the Xpress Boats family?
Please visit www.xpressboats.com/search-dealer to locate your nearest authorized Xpress Boats dealer.



Install marine batteries



Regular maintenance on outboards and boats

MAINTENANCE MATTERS®

GET THE MOST FROM YOUR OUTBOARD

Maintenance Matters is an essential online resource provided by Yamaha Outboards that helps boat owners properly maintain their outboard motors to get the most out of their investment. Visit maintenance.yamahayoutboards.com to learn more about corrosion prevention, fuel and electrical system, propeller solutions, engine oil and lube, lower unit, extended storage, capacities and specs, and more.

XPRESS APPAREL



BUILDING AN AFFINITY FOR XPRESS BOATS ON AND OFF THE WATER!

We've got you covered with Xpress Boats apparel! Shop for hoodies, t-shirts, performance shirts, windbreakers, shorts, hats, and more. Enjoy best-in-class name brands that you know and love, like Simms, Carhartt, AFTCO, and Richardson. Show everyone at the ramp that you understand the benefits of running the original, all-welded aluminum boat.



Visit our online store at
XpressBoatsApparel.com
or scan the code to the right



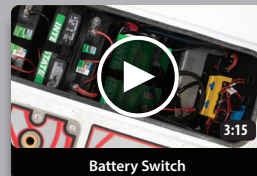
OWNER'S MANUAL

DESIGNED TO INFORM & EDUCATE OWNERS ON KEY COMPONENTS OF THEIR NEW XPRESS!

Whether orienting yourself around the console of an X-Bay, setting up the Humminbird's on your Xclusive Pro Bass, or learning how to use the livewell on your Hyper-Lift Crappie, you will find it all right here. Each video includes step-by-step instructions to provide you all of the pertinent information you need for proper usage and satisfaction of your Xpress!



Scan to access Xpress Boats online owner's manual.



Battery Switch



Hyper-Lift H190 Bay Console

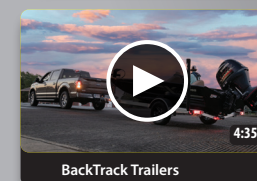


Pre-Season Boat Maintenance

YOUR XPRESS
CONSOLE
ELECTRICAL SYSTEM
ELECTRONICS
OPERATING YOUR XPRESS
TRAILERING
CARE & MAINTENANCE



Xclusive Pro Bass Console



BackTrack Trailers

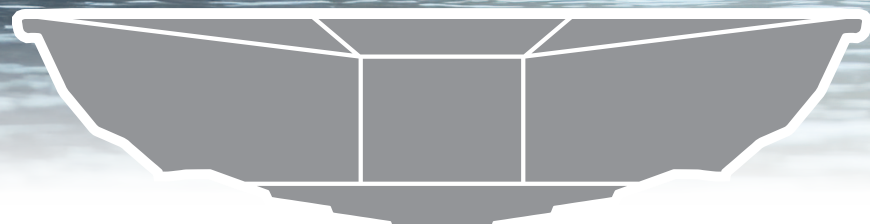


Trolling Motor Footwell

- UNIBODY INJECTED FOAM CONSTRUCTION
- EXCEPTIONAL HIGH-PERFORMANCE
- MADE FROM THE FINEST 5052 ALUMINUM ALLOY
- UNBELIEVABLE TURNING CAPABILITY
- ALL-WELDED CONSTRUCTION
- LONGITUDINAL RIB CONSTRUCTION

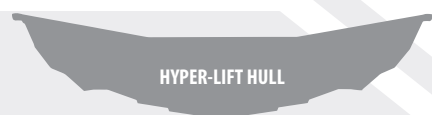
THE HULL

Truth



ALL-NEW XR HYPER-LIFT HULL

The XR Hyper-Lift Hull is an updated design based on the original Hyper-Lift Hull. This hull has an optimized rake and center seams for smoother transitions and a more consistent hull shape. It also has a step transom to improve the center of gravity of the boat and reduce hydrodynamic drag. There is a new design in the trunk area that has added space to allow for better installation of batteries or accessories.



HYPER-LIFT HULL

The Xpress Boat Hyper-Lift Hull is a marvel of engineering excellence, providing a lightning fast hole shot, unbelievable turning and a smooth steady, dry ride. This hull is the finest platform for our high performance boats.



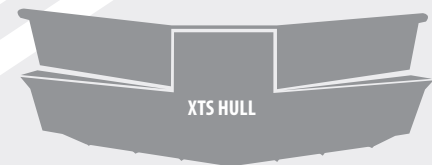
SHALLOW WATER HULL

The Shallow Water Hull design has a 5" prop tunnel and rear flotation pods to optimize peak shallow water performance, so you can venture where fiberglass boats won't dare to go.



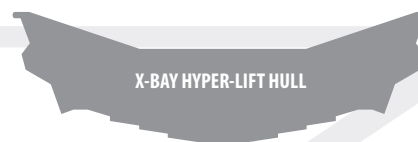
SKIFF HULL

The Xpress Boat Skiff Hull is a new design, expanding our stellar line of high-performance hulls. This shallow draft hull embodies all of the great qualities that make Xpress Boats the original and the best.



XTS HULL

The Xpress Boats XTS Hull is the latest in high-performance hulls specifically designed for outboard use in any hunting or fishing pursuit. Narrowing the beam and widening the bottom is the premise of this hull.



X-BAY HYPER-LIFT HULL

The X-Bay Hyper-Lift Hull has integrated spray pads that prevent spray, increase stability, and the hull has seven pads instead of five which creates a more efficient hull, allowing for a deeper hull that gives better handling in rough water.



BAYOU MUD HULL

The Bayou Mud Hull is the perfect match for today's surface drive mud motors. Featuring an extremely shallow draft, this hull is designed to slide over submerged objects and vegetation and through mud. Xpress Bayou Boats: designed tough, loaded with excitement!



HYDRO-DYNAMIC HULL

The Hydro-Dynamic Hull is the muscle of the XP Series. Interconnecting longitudinal ribs and all-welded aluminum supports provide the HD hull with solid performance in virtually any water condition.



HYPER-LIFT DB HULL

Unique and original to the hunting market, the Hyper-Lift DB Hull is fast, strong, and nimble. Plus, it releases from stumps fast. Its DNA stems from Xpress Boats line of high-performance bass, bay, and crappie boats.

PACKAGES

BASS

6" FRAME XTREME TRAILER PACKAGE

(Req. Tandem/Brake w/ Alum Wheels)
(X21PRO) 18" Aluminum Wheel Upg
(2 Axles), Custom Tread Plate Tandem
Fenders, HD Jack Stand, Flush Mounted
Tail Lights and Backup Lights, Ratchet
Buckles, and SeaDek Fender Pads.

XPLOER BASS SPORTSMEN PACKAGE

Pro Series Console and Pro Steering
Wheel, Large Tuck & Roll Seats, Minn
Kota Max 70 52" Shaft Trolling Motor,
Humminbird Helix 5 Chirp GPS , Livewell
Divider, and Trim on the Bow.

XTREME TRAILER PACKAGE

(Req. Tandem/Brake w/ Alum Wheels)
(X19PRO) 18" Aluminum Wheel Upg
(2 Axles), Custom Tread Plate Tandem
Fenders, HD Jack Stand, Flush Mounted
Tail Lights and Backup Lights, Ratchet
Buckles and SeaDek Fender Pads.

ELITE PACKAGE

Center Seat for T&R, 3 Bank Charger Upg,
Lights in LW & Storage, and 6 Ga. Wiring
Upg., Elite Steering Wheel, Fortrex 80 Upg,
and Helix 9 Chirp MSI Upg in Console.

LIMITED EDITION (LE) PACKAGE

Elite Pkg, Auto Bilge, Fold Down to
Euro Upg, Ultrex 80/MDI/ IP 52" Upg,
10' Talon w/ Bracket, Bow Panel w/
Cupholder, Helix 10 Chirp MSI Upg in
Console, Helix 10 Chirp MDI at Bow,
Ethernet Cable, SS Switches, and LE
Throttle Bracket.

HIGH-PERFORMANCE PACKAGE

(X19PRO & X21PRO) 10" Jack Plate,
SeaStar Hydraulic Steering Upg, Blinker
Trim, and Hot Foot.

APPEARANCE PACKAGE

(Must Upg. To Euro Fish Seat)
Custom SeaDek Liner, Matching Seat Trim,
and Matching Graphics. Available in Lime,
Bahama, Red, Blue, Seafoam, Dark Grey/
Lime, Dark Grey/Blue, Dark Grey/Red,
and Dark Grey/Black.

H-SERIES ELECTRONICS PACKAGE

3 Bank Charger Upg., Minn Kota Max 70
Trolling Motor Upg., and Helix 7 MSI Graph
Upg.

BAY & SKIFF

SALTWATER TRAILER PACKAGE

Composite Bunk Covers and Upgraded
Bow Roller.

XTREME TRAILER PACKAGE

(Req. Tandem/Brake w/ Alum Wheels)
(H24B & H22B) 18" Aluminum Wheel Upg
(2 Axles), Custom Tread Plate, Tandem
Fenders, HD Jack Stand, Flush Mounted
Tail Lights and Backup Lights, Ratchet
Buckles, and SeaDek Fender Pads.

BAY STAINLESS PACKAGE

6 Stainless Rod Holders, Stainless
Cup Holder Upgs., 4 Stainless Cleats,
Stainless Steering Wheel, and Stainless
Leaning Post w/o Foot Rest.

SALTWATER TEAM PACKAGE

Xtreme Marsh Pkg, 2 10' Talons with
Brackets, RT1 12ST w/i-Pilot Upg., Lights
in Livewells, Storage Boxes & Int., 10"
Hydraulic Jack Plate Upg, Radio w/2
Speakers, Humminbird Helix 12 Chirp MSI
G3N Upg., and 3 Bank Upg.

XTREME BAY STAINLESS PACKAGE

Bay Stainless Package, Upgrade SS Leaning
Post to Include Backrest & Footrest, and 2
Additional Stainless Cleats Midship.

REDFISH PACKAGE

Two Tone Paint, Minn Kota Riptide 70
Trolling Motor Upg., Trim on the Bow,
Humminbird Helix 5 Graph Upg., and
Aluminum Wheel Upgrade (1 Axle).

XTREME REDFISH PACKAGE

Redfish Pkg, Minn Kota Riptide 80 Trolling
Motor Upg., Humminbird Helix 9 MDI GPS
Graph, 2 Bank Charger, and 6 Gauge Wire
Upg.

MARSH PACKAGE

Redfish Pkg, Bay Stainless Pkg , 6" Atlas
Hyd. Jack Plate, Trim Gauge, Water PSI
Gauge, Livewell Timer, Recirculating
Baitwell, Auto Bilge, and 2 Euro Seats Upg.

XTREME MARSH PACKAGE

Marsh Pkg, Xtreme Bay Stainless Pkg Upg.,
Minn Kota Riptide 80, Humminbird Helix
9 MDI GPS Graph, 2 Bank Charger, and 6
Gauge Wire Upg.

H210B/H190B ELECTRONICS PACKAGE

2 Bank Charger, Minn Kota Riptide 70
Trolling Motor Upg., Trim on the Bow,
Helix 5 Graph Upg., and Aluminum Wheel
Upgrade (1 Axle).

APPEARANCE PACKAGE

(Must Upg. To Euro Fish Seat) Custom
SeaDek Liner, Matching Seat Trim, and
Matching Graphics. Available in Lime,
Bahama, Orange, Red, Blue
and Seafoam.

CRAPPIE

APPEARANCE PACKAGE

(Must Upg. To Euro Fish Seat) Custom
SeaDek Liner, Matching Seat Trim, and
Matching Graphics. Available in Lime,
Bahama, Orange, Red, Blue
and Seafoam.

H-SERIES ELECTRONICS PACKAGE

3 Bank Charger Upg., Minn Kota Max 70
Trolling Motor Upg., and Helix 7 MSI Graph
Upg.

CATFISH

SPORTSMEN PACKAGE

Pro Steering Wheel, Large T & R Seats,
Minn Kota Max 70 52" Shaft Trolling
Motor, Humminbird Helix 5 Chirp GPS ,
L/W Divider, and Trim on the Bow.

BAY & SKIFF FEATURES



XR21BAY CONTOURED LEANING POST & BACKREST CUSHION



XR21BAY BOW CUSHIONS



XR21BAY CENTER CONSOLE WITH DASH, WINDSHIELD, AND GRABRAIL



XR21BAY SEADEK CONSOLE STORAGE TRAY WITH TWO CUP HOLDERS



OVERRSIZED JUMP SEAT IN FRONT DECK WITH STORAGE UNDERNEATH (X-BAY LOUNGE)



SADDLE JUMP SEAT CUSHION



DARK GREY JUMP SEAT CUSHION



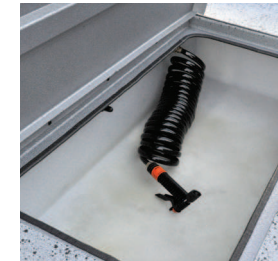
STANDARD FOLD DOWN LADDER ON X-BAY AND H-BAY



TACKLE STORAGE BEHIND CENTER CONSOLE W/TOE KICK BACKREST ON XR21BAY, X-BAY & H-BAY SERIES



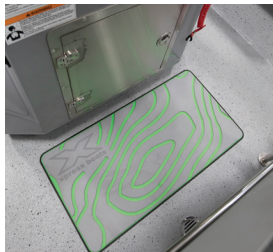
WALKBOARD W/CUP HOLDER



OPTIONAL HIGH PRESSURE WASH DOWN STATION



OPTIONAL WET SOUNDS AUDIO SYSTEM W/RGB UNDER RAIL LIGHTS



OPTIONAL SEADEK HELM PAD



TOE KICK CENTER CONSOLE BAITWELL



4 ROD HOLDERS & 1 CUPHOLDER ON EACH SIDE OF THE X-BAY & H-BAY CONSOLES (DOES NOT INCLUDE X-BAY LOUNGE)



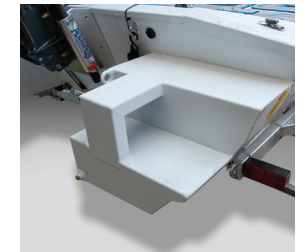
AERO-X FOLD DOWN MESH SEAT



OPTIONAL SKIFF POLING PLATFORM



FIBERGLASS SKIFF CONSOLE W/BLACK BAY STEERING WHEEL, MULTI-FUNCTION GAUGE & GRAB HANDLES



SHALLOW WATER POD



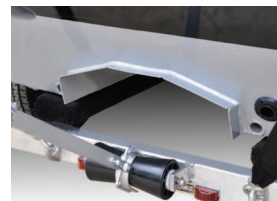
REMOVABLE STORAGE LINER IN FRONT DECK



OPTIONAL ATLAS HYDRAULIC JACKPLATE



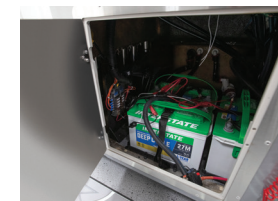
X-BAY RADIUS ROD BOXES



SHALLOW WATER BAY TUNNEL



OPTIONAL TROLLING MOTOR SLIDE BRACKET



BATTERY TRAYS AND BREAKERS UNDER CENTER CONSOLE W/TOE KICK

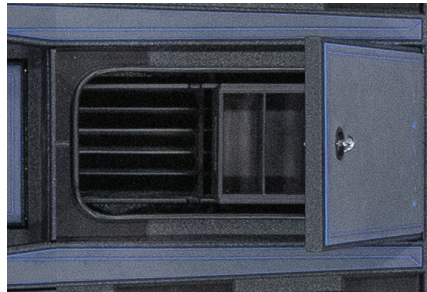


OPTIONAL WET SOUNDS AUDIO SYSTEM

BASS & CRAPPIE FEATURES



XR21 CONSOLE



X21PRO & X19PRO TACKLE ORGANIZER



COIN BOX - STANDARD ON XR21. OPTIONAL ON H-BASS, AND H-CRAPPIE. NOT AVAILABLE ON X-PRO BASS.



STANDARD STAINLESS BOARDING STEP (H BASS & CRAPPIE)



XR21 BUILT-IN TROLLING MOTOR RECESS



XR21 REAR STORAGE TO ACCESS FUEL TANK AND BATTERIES



BOW LIVEWELL/BAITWELL FOR H-CRAPPIE SERIES



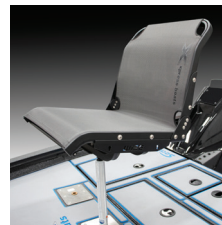
ELITE PACKAGE STEERING WHEEL



LE PACKAGE STEERING WHEEL



PRO STEERING WHEEL



AERO-X FOLD DOWN MESH SEAT (H-CRAPPIE ONLY)



RECIRCULATING LIVEWELL IN REAR DECK W/DIVIDER (X-BASS ONLY)



X-BASS PASSENGER CUP HOLDER, ROD BUTT HOLDER & OPTIONAL SEADEK ACCENT TRIM KIT



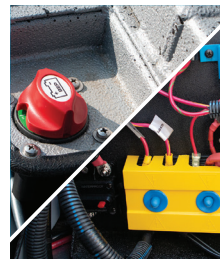
OPTIONAL HOT FOOT (XR21 AND X-BASS ONLY)



SEADEK CENTER SEAT (H-BASS & H-CRAPPIE ONLY)



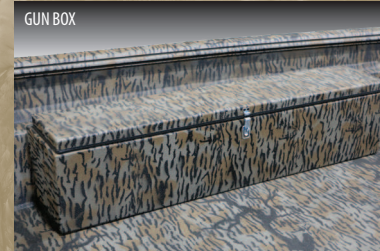
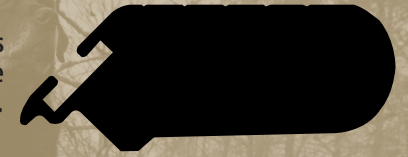
OPTIONAL XCLUSIVE PASSENGER CONSOLE & GLOVE BOX



X-BASS BATTERY SWITCH BOARD

ACCESSORY RAIL SYSTEM

Attach multiple accessories to Xpress Boats customized rail system including all-in-one convenience station and mud boat grab rail.



GUN BOX



CONVENIENCE STATION



ROD HOLDER



SEELITE LED LIGHT BAR



TRANSM STEP



XTREME CONVENIENCE STATION



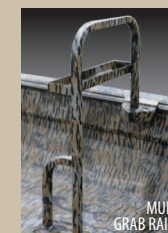
MESH DECOY BAG



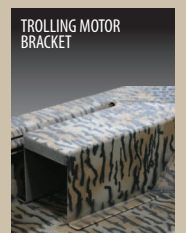
GUN HOLDER



ALUMINUM CENTER CONSOLE



MUD GRAB RAIL



TROLLING MOTOR BRACKET



1 9 6 6 - 2 0 2 6

XPRESS BOATS ONLINE OWNER'S MANUAL

Our online owner's manual is designed to educate owners on key components of their new Xpress. It is their single source for everything from orientation with the console electronics, operating procedures, trailering, care, and maintenance tips. A diamond-shaped hang-tag with convenient QR code is included on each boat shipped from the Xpress Boats plant to give customers quick access to the library of videos on their smartphone. Scan the code above to see for yourself!



xpress boats
we build excitement

ONLINE OWNER'S MANUAL

Scan the code below to access the
Xpress Boats online owner's manual.



2026 CATALOG

Best-in-class partners featuring:



Xpress Boats • 199 Extrusion Place • Hot Springs, AR 71901

WWW.XPRESSBOATS.COM

Printed in the U.S.A. 2026 Xpress Boats, Inc. All specifications, features, equipment, technical data, options, color, and trim in this brochure are based on the latest information available at time of printing. Xpress Boats reserves the right to make changes or alterations at any time, without notice. Some boats may be shown with optional equipment available at additional costs.