



RACING  
300

ALL-NEW

250R & 300R

MERCURY RACING 4.6L V-8 FOURSTROKES

#### UNMATCHED SPEED, ACCELERATION & EFFICIENCY

- Naturally aspirated, 4.6 Liter V-8; 44% higher displacement
- Dual overhead cam (quad cam) four valve design for unsurpassed power and torque
- Transient spark calibration increases torque 5-7% during hole shot for unmatched acceleration
- Advanced Range Optimization automatically adjusts fuel delivery for up to 10% improvement in cruise-speed fuel efficiency
- 87-octane (90 RON) pump fuel calibration and global emissions compliance

#### SPORTS-CAR-LIKE DRIVABILITY AND HANDLING

- Tri-Ram midsection with high-durometer elastomer upper mount and solid lower mounts for enhanced handling at higher speeds
- Selected 300R models with the heavy-duty midsection feature forged transom brackets with single ram power trim and remote trim pump designed to endure the harsh offshore environment
- The surface piercing Sport Master gearcase provides maximized efficiency for boats capable of speeds in excess of 85 mph
- Electronically-actuated throttle and shifting, compatible with Mechanical or DTS remote controls

[www.MercuryRacing.com](http://www.MercuryRacing.com)

MERCURY  
RACING

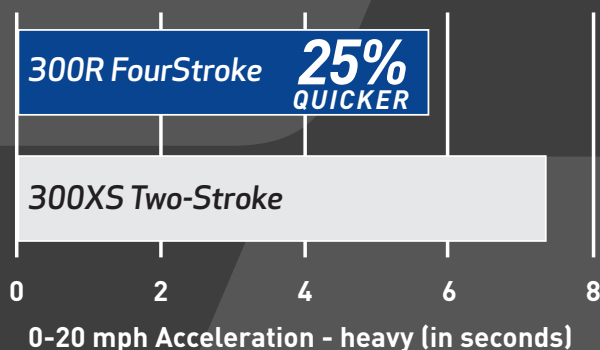


# The new 250R and 300R outboards boast class-leading 4.6L displacement, resulting in **40% more mid-range torque**.

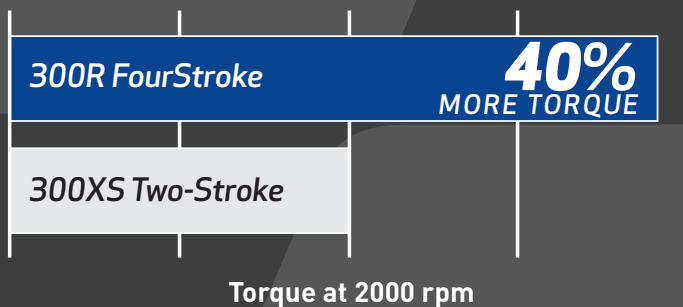
Mercury's proprietary transient spark calibration, which boosts torque by as much as 7% during hole shot by optimizing spark timing and fueling, gets boats on plane quickly.

...all that displacement and power are delivered in a compact light weight package with 26-inch mounting centers, perfect for repower and multi-engine options.

## EXHILARATING ACCELERATION



## UNMATCHED TORQUE



## RACE INSPIRED PERFORMANCE

Designed, developed and manufactured in-house, the naturally aspirated, 4.6L V-8 fourstroke engines share Mercury Racing's venerable Quad Cam Four Valve (QC4) sterndrive DNA – complete with aluminum four-valve cylinder heads and dual overhead camshaft (DOHC) valve train. The four valve heads and DOHC valve train are integrated with Mercury's proprietary V-8 cylinder block, packed with high performance hardware.

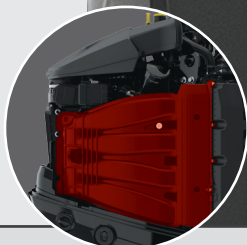






#### POWER

Dual overhead cam (quad cam) four valve design for enhanced power and durability



#### INTAKE

- Naturally aspirated, 4.6 Liter V8 engine
- 300 rated horsepower on 87 octane pump fuel
- 200 RPM higher operating range for greater top-end speeds.
- Racing exclusive intake cam profiles and short intake manifold runners for maximized power throughout the engine operating rpm band



#### MIDSECTIONS

- Tri-Ram midsection with high-durometer elastomer upper mount and solid lower mounts for enhanced handling at higher speeds
- Heavy duty midsection models come with solid mounts and robust, forged transom brackets with single ram power trim and remote trim pump designed to endure the harsh offshore environment
- Optional electro-hydraulic power steering for an exceptionally smooth and responsive driving experience

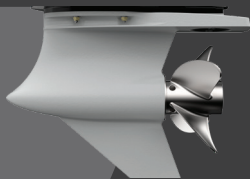


#### INTEGRATED REAR TIE-BAR

An integrated rear tie-bar mounting plate on selected H.D. Midsection models for enhanced stability on high speed multiple engine applications

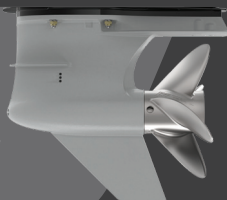
## GEARCASE OPTIONS

### SPORT MASTER



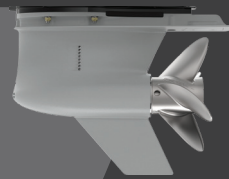
- The surface piercing Sport Master, designed for boats capable of speeds in excess of 85 mph, features low-water pick-ups and a crescent leading-edge for maximized efficiency and speed

### TORQUE MASTER



- The Torque Master, designed to run partially surfaced, carries the load of heavier tournament bass boats and multi-species hulls while maximizing top speed and drivability

### 5.44 HD



- The 5.44" HD is designed for use on bay boats and multi engine performance center consoles where the application requires a more submerged gearcase

## BOLD NEW STYLING



Aggressively styled top cowl designates a new era of high performance outboard propulsion from Mercury Racing. Bold new, ultra-premium graphics with Devil Red accent panel screams performance.

## EASY MAINTENANCE



Industry-exclusive Top Cowl Service Door simplifies routine maintenance with easy oil checks and oil fills without removing the cowl. Graphic, hour-based maintenance decals under the cowl for easy access to all regular powerhead maintenance points. Maintenance-free valve-train for life of the engine.

## COLOR OPTIONS



An optional Graphite Grey accent panel is available as a kit. A paint-ready kit is also available to custom match the engine to the boat.

## SPECIFICATIONS

	250R	300R	300R HD
<b>Horsepower</b>	250	300	300
<b>WOT RPM</b>	5600-6200	5800-6400	5800-6400
<b>Engine Type</b>	V-8 [64 degree] with Dual Overhead Cam (DOHC and 32-valves)	V-8 [64 degree] with Dual Overhead Cam (DOHC and 32-valves)	V-8 [64 degree] with Dual Overhead Cam (DOHC and 32-valves)
<b>Displacement</b>	4.6L (279 CID)	4.6L (279 CID)	4.6L (279 CID)
<b>Induction System</b>	Performance-Tuned Long-Runner Intake Manifold	Custom Racing Short-Runner Intake Manifold	Custom Racing Short-Runner Intake Manifold
<b>Midsection Design</b>	Tri-Ram Midsection with High-Durometer Upper Mount and Solid Lower Mounts	Tri-Ram Midsection with High-Durometer Upper Mount and Solid Lower Mounts	Heavy Duty Mid Section with Solid Mounts; Remote Trim System
<b>Fuel Requirements</b>	Unleaded Regular 87 Octane Minimum (R+M/2) or 90 RON 10% Ethanol Maximum	Unleaded Regular 87 Octane Minimum (R+M/2) or 90 RON 10% Ethanol Maximum	Unleaded Regular 87 Octane Minimum (R+M/2) or 90 RON 10% Ethanol Maximum
<b>Charging System</b>	85-amp (1071 Watt) with Idle Charge	85-amp (1071 Watt) with Idle Charge	85-amp (1071 Watt) with Idle Charge
<b>Starting</b>	Electric Start with SmartStart Protection	Electric Start with SmartStart Protection	Electric Start with SmartStart Protection
<b>Throttle and Shift Controls</b>	Mechanical	Mechanical and Digital Throttle and Shift	Mechanical and Digital Throttle and Shift
<b>Gearcase</b>	Sport Master	Torque Master Sport Master	Sport Master 5.44" H.D.
<b>Gear Ratio</b>	1.75:1	1.75:1	1.75:1
<b>Warranty</b>	3-Year Limited	3-Year Limited	3-Year Limited
<b>Dry Weight (lbs./kg)*</b>			
<b>L - 20"</b>	520 lbs / 236 kgs	512 lbs / 232 kgs	546 lbs / 247 kgs**
<b>XL - 25"</b>	n/a	n/a	556 lbs / 252 kgs**
<b>XXL - 30"</b>	n/a	n/a	566 lbs / 257 kgs**

\*Dry weight refers to base engine without liquids, battery cables, throttle/shift cables, bolt-on steering components, mounting hardware, or propeller/hub kits.

\*\*300R HD weight includes remote trim pump assembly